

WEATHER

	Min.	Max.	Precip.
Thursday, Nov. 24	33	39	0.00
Friday, Nov. 25	22	34	0.19
Saturday, Nov. 26	18	24	trace
Sunday, Nov. 27	13	26	0.21
Monday, Nov. 28	20	26	0.00
Tuesday, Nov. 29	21	23	trace
Wednesday, Nov. 30	36	39	0.06

ONE HUNDRED-EIGHTH YEAR—No. 25

14 Pages This Week Plus 8-Page 7th Supplement

CHELSEA, MICHIGAN, THURSDAY, DECEMBER 1, 1977

15c per copy

SUBSCRIPTION: \$6.00 PER YEAR

The Chelsea Standard

QUOTE

"Truth is the object of philosophy, but not always of every philosopher."

Anonymous.



MABEL W. HOLMES

Chelsea Milling Director Dies

Mabel W. Holmes, co-owner of Chelsea Milling Co., makers of "Jiffy Mixes," died Thursday, Nov. 24, at the age of 86. Mrs. Holmes was the widow of Edward S. Holmes, Sr. After their marriage in 1912, they pioneered the development of prepared king mixes. Following the death of Mr. Holmes in 1936, Mrs. Holmes and her twin sons, Howard Jr. and Dudley, continued to run the family-owned business. Mrs. Holmes was born Dec. 1, 1891, in Mattoon, Ill. She was educated from Chelsea High School in 1907, and from Ypsilanti Normal College, now Eastern Michigan University, a few years later. She taught school in Illinois until her marriage. It was she who thought of the "Jiffy Mix" and developed a formula that was used in the U.S. She remained active in her m's affairs almost until her death. Mrs. Holmes was a member of the Ann Arbor Garden Club

and the National Farm and Garden Club chapter in Ann Arbor. She was also a member of the John Knox Retirement Village, an Arbor, at the age of 86. Mrs. Holmes was the widow of Edward S. Holmes, Sr. After their marriage in 1912, they pioneered the development of prepared king mixes. Following the death of Mr. Holmes in 1936, Mrs. Holmes and her twin sons, Howard Jr. and Dudley, continued to run the family-owned business. Mrs. Holmes was born Dec. 1, 1891, in Mattoon, Ill. She was educated from Chelsea High School in 1907, and from Ypsilanti Normal College, now Eastern Michigan University, a few years later. She taught school in Illinois until her marriage. It was she who thought of the "Jiffy Mix" and developed a formula that was used in the U.S. She remained active in her m's affairs almost until her death. Mrs. Holmes was a member of the Ann Arbor Garden Club

Hockey Team Blasts Lenawee in 8-1 Win

Chelsea High's hockey team outated and out-played a temperamental Lenawee team last Sunday, come out on top of the final decision. The Bulldogs, now 3-1 on the season, never lost their control the game though Lenawee tried best to provoke a fight, according to Chelsea's manager, Richard Glasdon.

the price for the rough play when members of the team spent 24 minutes in the penalty box, and picked up one 10-minute misconduct. Chelsea, on the other hand, came to play hockey and consequently spent a scant eight minutes in the penalty box. Dave Baldwin was stationed at the net for Chelsea during the first (Continued on page four)



CHRISTMAS BAZAAR PLANS: Displaying some of the items to be available at the St. Barnabas Christmas Bazaar, scheduled for Saturday, Dec. 3, at the church, are, from left, Alice Walz, Mabel Grace Simpson and Marjorie Beaumont. Many home-made articles and Christmas decorations will be featured at the affair, such as candle arrangements, tree ornaments and creative Christmas trees. A luncheon will be served from 11:30 a.m. to 1:30 p.m.

Cagers Lose To Northwest, Stockbridge

Chelsea High's varsity cagers took an early lead from Jackson Northwest in their season opener last Saturday, but a poor shooting performance in the second quarter led to the Bulldog downfall. Unable to make up the second-quarter deficit in the two final quarters, Chelsea finished behind Jackson, 64-63.

"With only four minutes to go in the fourth quarter, we were within five points of Jackson, but they hit for three baskets in a row and got their lead back up to 11; that was the game—we couldn't reduce their lead after that," Coach Robin Raymond reported.

He added that the Bulldogs were hurt most by their rebounding performance. "Jackson out-rebounded us, 39-35, and we were a bigger team," the coach said. "We needed control of the boards to beat Northwest."

In the game, Chelsea had a 15-13 lead at the end of the first quarter, but shot only 20 percent in the second to score a scant seven points. Jackson, on the other hand, netted 20 points in the second quarter to move into a 33-22 half-time lead over the Bulldogs.

Chelsea returned in the third quarter to cut its deficit to four points, but Jackson met the Bulldog challenge with another scoring spurt and moved ahead of Chelsea by 11 points at the end of the quarter.

Coming out aggressively in the fourth quarter, Chelsea, whittled down the Northwest lead to five points with only four minutes to go, but it was then that the game was decided with Jackson's three successive baskets.

Leading scorers for the Bulldogs were Randy Harris with 15 points, and Mark Feeney with 11. Coach Raymond praised the efforts of both guards, saying "they did a good job both on offense and defense."

Although Chelsea's varsity cagers moved two points ahead of Stockbridge in the opening moments of their first home game of the season Tuesday night, it was the Bulldogs' only lead of the night as the Panthers quickly shredded that advantage, dominated the remainder of the game, and finished with an 84-57 victory. Stockbridge moved into a 26-7 lead at the end of the first quarter when Chelsea was able to net only 3 of 20 scoring attempts from the field.

"We felt we had to run to stay in the game with Stockbridge and keep pressure on them, but that strategy obviously couldn't work when we were shooting only 3 of 20," Coach Robin Raymond explained. A miscalculation by the Bulldogs was another factor contributing to their loss, according to Coach Raymond. "We did a good job defending against the Stockbridge power shooter, center, Craig Basore, holding him to 12 points, but in our concentration on him, we gave up 24 points to Dan Stanley," he said. "We didn't count on Stanley scoring that much."

Faced with the Panthers' 28-7 first quarter lead, Chelsea came back in the second period to out-score Stockbridge, 18-14. "We took the same shots as we had in the first quarter, but the difference was they fell in," Coach Raymond reported. Still, at half-time, Stockbridge was ahead, 40-25.

Stockbridge returned in the third quarter to blitz the Bulldogs, 28-6, and secure the win, even though Chelsea fought back in the fourth to again out-score the Panthers, 26-16.

"It was in our favor that we didn't quit when it was obvious Stockbridge was winning," Coach Raymond noted. (Continued on page five)

Wrestlers Battle Back To Down Columbia

In what was described as "a very close contest" by Coach Richard Bareis, Chelsea's varsity wrestlers battled back and forth with their Columbia Central counterparts Tuesday evening before finally taking the 33-26 decision as a result of their domination of the heavyweight classes.

Along with the performance of Chelsea's heavyweights, the big key to the Bulldogs' second win in as many meets, could well have been 98-lb. Bob Beeman who fought back from a bad first period to score a pin win in the third period, according to Coach Bareis.

In other varsity action, Tony Wisniewski suffered a pin loss at 105 lbs., followed by a 7-2 loss by Scott Dal'on at 112 lbs. However, at 119 lbs., Chuck Young finished with an 8-0 decision in what could only be called a one-sided match.

John Bulick, wrestling in a tight

3-2 match, got caught late in the contest and was pinned at 5:51. Chelsea took control of the meet at this point and began reversing the results. Although Mike Young missed a pin, he scored a 15-3 win in the 132-lb. class, followed by Bart Bauer at 138 lbs., who won a widely played match by a 12-9 score.

At 145 lbs., Chris Umstead wrestled courageously, but was out-manned, 20-7, while Terry Thompson, at 155 lbs., came up with a reversal at the third period buzzer to collect a 4-3 win.

At 165 lbs., Brian Van Reesema scored a third period reversal that also led him to a 4-3 win, and Todd Headrick then took a 7-2 decision at 178 lbs. Rick Risner, wrestling up in weight, lost by a pin, but heavyweight Leon Brown scored a 39 second pin to wrap up the match for Chelsea.

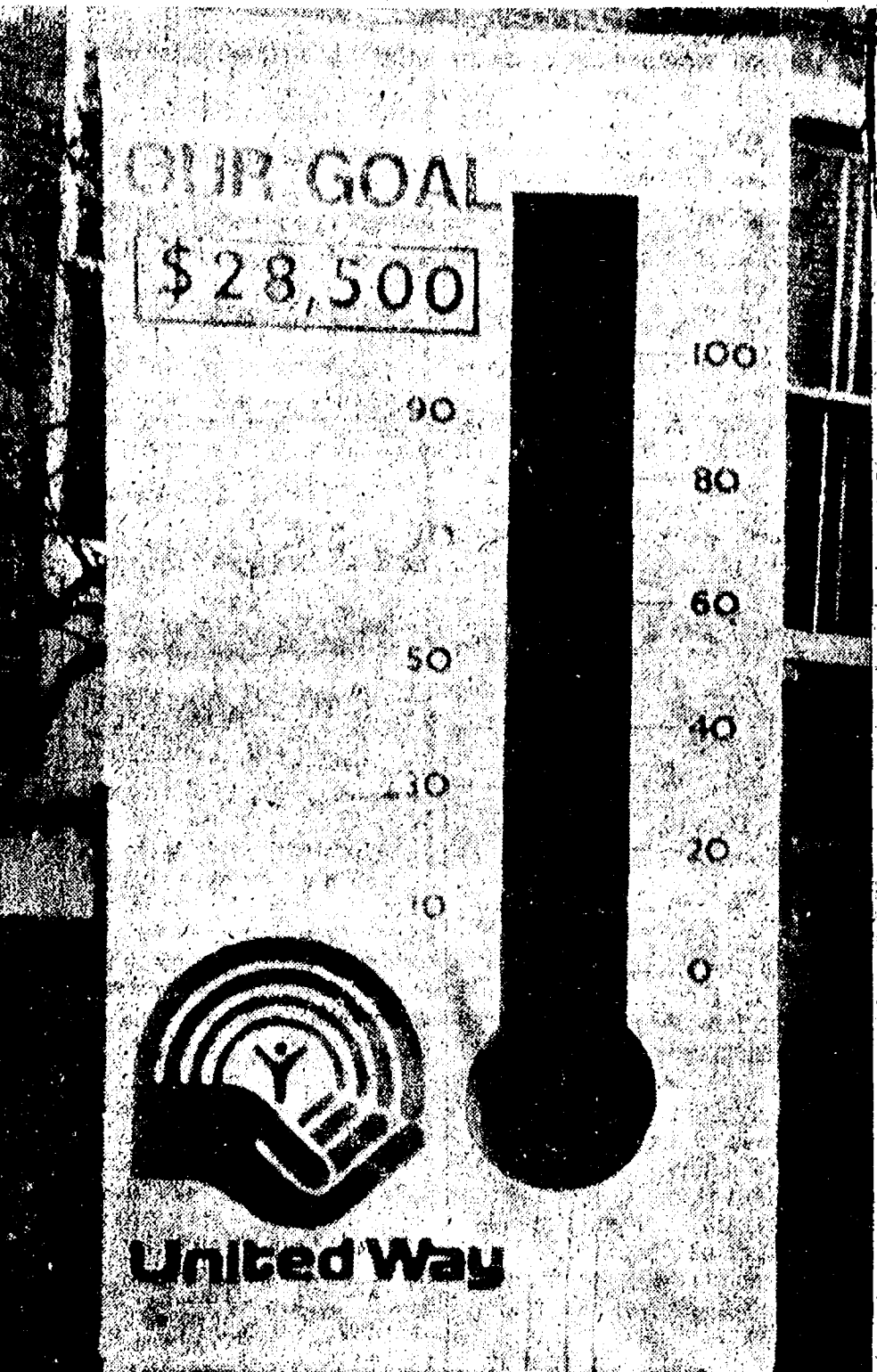
Santa Visiting Chelsea Area Youngsters

Apparently Santa Claus took advantage of the area's first major snowstorm of the season last weekend to sleigh down from the north pole and take up his annual, though temporary, residence in the Longworth Plating building on N. Main St.

Jolly Old St. Nick began his ritual of greeting area parents and children last Saturday, and will follow with two more visitation sessions on Dec. 10 and Dec. 17, from 1 p.m. to 3 p.m. Along with traditional treats for youngsters, Santa is also periodically giving away gift certificates from Chelsea merchants to area adults.

Beginning Dec. 12, and continuing through Dec. 23, stores in the downtown Chelsea area will be open evenings until 8:30 p.m. to accommodate holiday shoppers. Free gift wrapping at most retail firms, and Christmas carols piped to the streets, have already been arranged in keeping with the season's spirit.

Santa's visits are being sponsored by Chelsea Merchants Association.



OVER THE TOP! When sign painting weather returns, the Chelsea United Way thermometer in front of the post office will be updated to look like this—27 percent above the 1977 goal of \$28,500. The current drive now stands at \$36,313, or nearly \$3,000 over goal.

Registration Slated For Biddy Basketball

On Dec. 3, biddy basketball registration will be conducted at Beach Middle school, from 10 a.m. until 12 noon. Biddy basketball is an organized basketball league for children between the ages of 7 and 12. The emphasis of this organization is fun. Biddyball allows every child on every team the opportunity to play.

Biddy basketball will be divi-

ded into three divisions. There will be the WBA for 7- and 8-year-olds, the ABA for 9- and 10-year-olds, and the NBA for 11- and 12-year-olds. The WBA will be under the direction of Duane Haas, the ABA under Bill Sweet, and the NBA under David Sweet.

At the registration session on Dec. 3, fees will be collected and (Continued on page five)

United Way Fund Hits 127% of Goal

As the 1977 fund campaign for Chelsea United Way nears its final stages, pledges and gifts stand at a record high of \$36,313 as of Nov. 29, according to Will Connelly, campaign chairman. The present total represents almost 127 percent of the 1977 goal of \$28,500.

Connelly praised the campaign leaders and workers for their outstanding efforts and then added, "Hard work by our volunteers was one side of the coin; the other has to be the generous giving of our

Chelsea area people and organizations."

Captains in the 1977 fund drive were: Pat Whitesall, residential; Linda Mayer, rural; Dale Schumann, commercial; Betty Cox, schools; Lyle Christwell and Sheridan Springer, light industry; Marci Wadhams and Pat Brooks, Chelsea Hospital; Marty Neuberger, organizations; and David McLaughlin, professional. Schumann is also serving as finance chairman for the campaign.

Girls Varsity Cagers Win Tourney Game

Chelsea High's girls varsity basketball team won the first game of their district tournament Monday evening, defeating Jackson County Western, 69-36.

The team has been working on a new fast-break offense which makes use of each player's speed, and tried this new strategy against a slower Western team with ex-

cellent results, according to Coach Cheryl Vogel.

The Bulldogs took a 21-10 lead in the first quarter, stretching it to 38-18 at the half.

High scorer for Chelsea was Nanette Push with 20 points. Also in double figures were Shelley Warren with 15 points, and Pen-

(Continued on page four)

Matmen Trample Jackson Northwest

Chelsea High wrestlers rolled to an easy 53-16 win over Jackson Northwest in their season opener Tuesday, Nov. 22. Although the contest was termed "a mismatch" by Coach Richard Bareis, he noted the meet "gave some Chelsea wrestlers valuable experience."

Freshman Bob Beeman wrestled hard and showed potential in his 9-0 loss at 98 lbs., while at 105 lbs., sophomore Tony Wisniewski displayed excellent talent in gaining a 10-1 superior decision.

In the 112-lb. division, Andy Bulick was out-classed in his debut on the mats, but he fought hard and was pinned with only 15 seconds left in the match. At 119 lbs., junior Chuck Young scored a pin win in the second period, and senior John Bulick followed with a third-period pin in the 126 lb. class.

At 132 lbs., Mike Young ran up a 12-0 score before wrapping his opponent in a second period pin. (Continued on page five)



LEAGUE CHAMPIONS: Members of Chelsea High's league champion girls varsity swimming team display winning smiles and the confidence that led them to an 11-2 title taking record for the 1977 season. Formed a little more than one year ago, the team has risen to the number one spot with speed unequalled in the history of Chelsea High sports. In the first row, from left, are Dawn McDowell, Lisa Radke, Michelle Alexander, Sue Cobb, Sara Borders and Kristi Fahrner. In the second row, from left, are Nancy Heller, Teresa Degener, Michele Clark, Annette Kuhl, Donna Alexander, Marla Warren, Patti Schumann and Assistant Coach Laurie von Jole. In the third row, from left, are Coach Larry Reed, Shannon Springer, Kollette Rinehart, tri-captain Shelly Springer, Shannon Culver, Jane Weisner, Molly Bacon, tri-captain Cathy Volta and tri-captain Sue Ingils.

Girls Varsity Swimming Team Collects First League Crown

Chelsea High's girls varsity swimming team ended its season last week with an 11-2 league championship record and a first-place finish in its own Invitational.

Competing with the Bulldogs in the Chelsea Invitational were teams from four other schools. Final results were Chelsea, 369; Dundee, 304; Willow Run, 176; Riverview, 167; and Erie-Mason, 165. In this type of meet, 12 pla-

ces were scored in each event and awards presented to the top 12 finishers, as in the state meet," Coach Larry Reed said.

Chelsea was led by Shelly Springer in the 50- and 100-yd. freestyle races, Sara Borders in the 100-yd. butterfly, and Cathy Volta in one meter diving. In the 200-yard medley relay, Chelsea's B team, composed of Lisa Radke, Teresa Degener, Shan-

non Culver and Donna Alexander, finished 6th, while the A team, composed of Michele Alexander, Nancy Heller, Sara Borders and Cathy Volta, took 2nd-place honors.

The 200-yd. freestyle race resulted in four more Chelsea place winners. In the event, Shannon Springer finished 3rd, Annette Kuhl, 6th, Patti Schumann, 9th, and Jane Weisner, 12th. (Continued on page six)

Established 1871
The Chelsea Standard
 Excellence Award By Michigan Press Association
 1951-1952-1960-1964-1965-1966
 Walter P. Leonard, Editor and Publisher

Published every Thursday morning at 300 North Main Street, Chelsea, Mich. 48118, and second class postage paid at Chelsea, Mich., under the Act of March 3, 1879.

Subscription Rates (Payable in Advance)
 In Michigan: One Year \$6.00, Six Months \$3.50, Single Copies \$.20
 Outside Michigan: One Year \$8.50, Six Months \$4.50, Single Copies \$.25

MEMBER
NATIONAL NEWSPAPER
 Association - Founded 1885
 National Advertising Representative:
MICHIGAN NEWSPAPERS, INC.
 257 Michigan Ave.
 East Lansing, Mich. 48823

Uncle Lew from Lima Says:

DEAR MISTER EDITOR:

Ed Doolittle told the fellows at the country store Saturday night that the longer he lives the more he feels like he's driving the wrong way on the one-way road of life. Ed said everybody else must be dead and are coming back, but he likes to think they got lost and they are going back to the crossroad to ask the way. Ed said he got dizzy headed and pulled to the side of the road some months back when that little 11-year-old girl made the headlines all over the country cause some mean old men wouldn't let her box boys her own age. But Ed said he thought it up one side and down the other and he decided that good sense had prevailed for once, and he got back on the road and drove on.

Now, Ed said, reading from two clippings, he had saw in the same issue of the paper where grown wimmin are holding boxing matches on the sports page while the number of "housebands" is increasing in the wimmin's news. Ed allowed that the best thing he could do is to pull plum off the road afore he gets run over. He said he just can't git use to the idea of men doing the wash while the wimmin battle for the middleweight title. You know if the wimmin enjoy beating on one another they're going to demand their equal right to slug it out with the men, was Ed's words.

General speaking, the fellows didn't take Ed serious. First off, Bug Hookum said if Ed will wait aside the road the traffic cops or late will head back his way. Bug was of a mind that all this mixing of the roles of men and wimmin is like clothes fashions. If you wait long enuff they'll come back to where you are. Bug said he's got a double-breasted suit that's been in style four times, and it's still got wear in it. His old lady just leaves her skirts halfway between the ankle and the knee and she knows she'll be wearing the latest fashion at least half the time.

Clem Webster said he didn't want to sound like he had been brainwashed by his old lady, but he didn't see nothing wrong with the man helping out around the house. Fer so long, Clem declared, men have complained they're killing themselves off by chasing the rats out there in the high-pressure world, so let the wimmin git out and cut some years off their lives. The sooner we git back to the early American system of the squaws taking care of everything but the hunting and fishing the better off the country will be, was Clem's words.

It was Zeke Grubb that put the stopper in the role reversing jug. Zeke said it's a proved fact that we ain't never satisfied, so maybe the best way to appreciate what we got is to walk in the other feller's shoes for a few miles. Zeke said he's never had any doubts that he'd heap rather mend fences than darn socks, and if his old lady demands her equal right to do his work that don't make washing dishes any more appealing to him.

Personal, Mister Editor, I'm already as close to the Indian system as I can git, so I don't want to say anything to give my old lady and ideas.

Yours truly,
 Uncle Lew.

Dial-A-Garden Topics Listed

Dial-A-Garden, the system of pre-recorded daily gardening tips is sponsored by the Washtenaw County Co-operative Extension Service. The system is in operation 24 hours per day, 7 days per week. Interested persons are invited to call 971-1122 at their convenience and receive timely, up to date gardening information.

Next week's Dial-A-Garden topics are:
 Friday, Dec. 2—"House Plants for Humid Temperatures."
 Monday, Dec. 5—"Plants for Semi-Humid Terrariums."
 Tuesday, Dec. 6—"Plants for Dry Terrariums and Dish Gardens."
 Wednesday, Dec. 7—"Maintenance of Terrariums."
 Thursday, Dec. 8—"Assembling and Maintaining Dish Gardens."

Chronically Ill Need Balanced Health Services

Current emphasis on doctors, nurses and hospital beds may be out of balance when measured against social and psychological needs of the chronically ill, suggests a Michigan State University medical researcher.

A balanced approach to health services for many chronically ill persons should include such services as day care, senior centers, homemakers, friendly visitors, health aides and assistants, as well as doctors, nurses and hospital beds, says Dr. Joseph Papisider, associate director of health service education and research.

Although institutional care of the totally disabled will remain with us, states Papisider, "noninstitutional" care could be provided less expensively. This could include health care in the home and easy access to a variety of professional services.

"This implies that services for the chronically ill or disabled patient should be organized with greater emphasis on planning, patient education, counseling and enhanced communication between health professionals," he said.

Standard Want Ads will sell your unused items quickly and economically. Just call 475-3171.

MONEY MACHINES
MAKE \$\$\$\$\$\$ WHILE YOU SLEEP
FULL TIME INCOME POTENTIAL —
FOR PART TIME EFFORT

Nationally recognized, D & B Rated, Michigan Corp. is seeking reliable party with some capital, able to stand investigation; for a business you will own! We will consider "Terms" for responsible party.

Established Vending Route with late model equipment is now available to qualified Man or Woman!

No Experience or Selling Required . . . Can be easily handled in spare time . . . Has Full Time Potential!

IF SINCERELY INTERESTED in running a business of your own . . . CALL MR. POWELL . . . COLLECT . . . 800-572-5054.

Give your name . . . address and Phone No. and we will send you full information and our own credentials prior to any personal interview.

MICHIGAN MIRROR

By Warren M. Hoyt, Secretary, Michigan Press Association

Transportation Package Dead

The year for the state-wide transportation plan is gone. The package authored by Governor William G. Milliken and Rep. William Ryan (D-Detroit) was officially declared dead after road interest groups all threw their support to an alternative proposal providing more funding for highway construction and maintenance.

Little hope remains for the package to raise an additional \$147 million through increased gasoline and weight taxes until at least 1979.

All 148 members of the legislature face bids for re-election during 1978 and any increased taxes during an election year have a dismal track record during elections years.

Due to the pending transportation package, the Department of State Highways and Transportation is currently operating on a continuation budget at similar levels as last year.

Legislative leaders must now rewrite the department budget with sights set at simply retaining the current levels of public transportation.

Ryan suggested combining the general transportation fund with the State Trunkline Fund coupled with a possible gas or weight tax hike to raise an additional \$90 million for roads and public transportation.

The formula for Balanced Transportation, a coalition of road advocates, backed an alternate plan providing an additional \$109 million of which the lion's share would be earmarked for highways.

Ryan, labeling the proposal a step backwards, said failure of the year-long negotiations was the fault of intransigent road interests.

"It is arrogance that has built over the years because they have had a monopoly on funds. To think they are in a position to usurp \$63 million in general fund money

is arrogance that says give us what we want and to hell with everybody else," Ryan said.

Increases in transit costs from inflation and the evolving forms of transportation make the additional funds necessary. Estimates from the Michigan Public Transit Association indicates lack of increased funds will mean cut-backs in the state's medium-sized cities by up to one third.

Burial Site To Be Readied

No appeal is planned and the state will ready the Oscoda burial site for PBB contaminated cattle in compliance with an order by Oscoda circuit Court Judge Allan C. Miller.

Along with Governor Milliken, Attorney General Frank J. Kelly said the state would not appeal and accept precautionary measures and line the site with 20 feet of clay to eliminate any possible seepage of the toxic chemical.

Both the governor and attorney general are not convinced the clay liner is necessary.

However, after reviewing alternatives including incineration and out-of-state sites, the Oscoda site even with the clay liner requirement is the fastest and clearest way to dispose of the cattle found to be over the new tolerance level of 20 parts per billion in fat tissue.

The decision to comply with the court order remains the center of controversy and has been questioned by members of the legislature closest to the issue, who authored the PBB tolerance act.

Sen. John Hertel, chairman of the Senate Agriculture and Consumer Affairs Committee, challenged the wisdom of the state deciding not to appeal.

Hertel charges the governor and Department of Natural Resources officials did not properly check alternatives as allowed by the court order.

He said his office had discovered a plastic liner could be made at a fraction of the cost for the clay and would provide just as much safety as demanded by the court order.

Hertel also charged the governor of not using his powers properly in refusing to make a direct emergency appeal to the state Supreme Court. He suggested that such an appeal and subsequent hearings would be a source of embarrassment to the governor in that the state by-passed proper environmental review requirements.

Hertel was quick to point out the governor used those powers at other times this year on less important matters than the health and welfare of residents of the state.

The charges and countercharges on PBB continue to fly as the issue has become highly politicized. Michigan residents can be sure of only one thing, PBB, its effects and the handling or mishandling will remain before the public until the second Tuesday in November next year—election day.

JUST REMINISCING

Items taken from the files of The Chelsea Standard

4 Years Ago . . .

Thursday, Dec. 6, 1973—

Rolly Spaulding had a lot of questions Monday night, and Chelsea Board of Education president Howard Haelschwardt had a lot of answers when the two met for an interview that covers the ins and outs of the board's position on the development and need of the school building proposals.

New arrival in the Ron Harris household is Juha Paunonen, a Youth for Understanding exchange student who will spend most of the coming year in Chelsea. From his home in Helsinki, Finland, Paunonen was originally placed in an Ohio family's home, but mutual dissatisfaction brought him to Chelsea to become the community's third foreign student.

The Rev. Warner Siebert, pastor of St. Paul United Church of Christ, last week informed his congregation that he intends to accept a call to participate in a new concept, as of Jan. 20, "the shared ministry" at Zion United Church of Christ in North Canton, O.

A holiday art show, sale and ice cream social is planned for Dec. 17 and 18 by Chelsea High school art students, says Mrs. Laurie LaZebnik, art instructor. Mrs. LaZebnik notes that purchase prices will be minimal on the art work, since costs will reflect only the cost of materials used in construction.

14 Years Ago . . .

Thursday, Dec. 5, 1959—

Gerald J. (Jerry) Grohnert, Chelsea attorney, has announced his affiliation with the law offices of John W. Conlin, Jr., and Patrick J. Conlin at 3212 Alpine St., Dexter, on a part-time basis, effective immediately.

Cast in leading roles in Chelsea High's Senior Class play, "January Thaw," are Judy Livingston, Mike Schrader, Sue Schroen and David Runciman. Directing the comedy is David Kniesley, junior high school English teacher, and Pauline Johnson, student director.

"Chelsea Vignettes of Yesterday" was the topic for an interesting program presented by three area men at the December meeting of the Washtenaw Historical Society. Speakers for the program were Dr. A. A. Palmer, Paul G. Schabie, Sr., and Ellis Martin.

Chelsea High School Principal Charles Lane, in announcing open house plans for the school, said: "This year, the high school will hold a series of four to five programs for the parents and others in the district. These programs will feature specific departments or areas of the school and will all be built around the general theme, 'Vocational Education'."

24 Years Ago . . .

Thursday, Dec. 3, 1953—

Chelsea Trailer Park has been purchased by Mr. and Mrs. Bert R. Foster of North Territorial Rd., and the Fosters took possession Dec. 1. Mr. and Mrs. Kendel Brown had owned and operated the trailer park for the past seven years.

Howard G. Minier, Washtenaw County Road Commission manager, was in Chelsea late Monday afternoon to present safety award pins to employees who work out of the Chelsea yards. Assisting in making

the presentations was Wilbert Breitenwischer, Chelsea yard foreman.

Chelsea will again have a Christmas Home lighting contest this year, sponsored by the local Chamber of Commerce, and open to all residents of the community. Announcement of the contest was made this week by David Streiter, chairman of the project.

Two Christmas cartoon coloring contests, with prizes to be presented by Santa Claus, will highlight his visits here Dec. 5 and Dec. 12. The contests, sponsored by The Chelsea Standard, are open to children of the community through seven years of age.

34 Years Ago . . .

Thursday, Dec. 2, 1943—

Chelsea will participate in a county-wide drive this month for the collection of tin cans, according to an announcement by Paul C. Maroney, chairman of the local salvage committee. All cans must be washed clean, all paper removed, and the cans flattened.

On Dec. 7, the eighth grade is having a stamp booth in the hall of Chelsea High school to commemorate the bombing of Pearl Harbor on Dec. 7, 1941. It is hoped that every child will buy war stamps on that day.

Fr. E. J. Flanagan of Boys' Town, Nebraska, writes that wartime shortages have created a serious problem in the Boys' Town dining hall. The dining rooms are lacking several hundred table knives, lost through normal wear and tear to which such items are subjected. Chelsea 7th graders have agreed to collect and ship the knives collected locally.

Announcement is made by H. T. Moore that the name of the Lantis Coal Co., which he has owned and operated for the past two years, has been changed to Moore Coal Co., effective at once.

Tonight and Every Thursday THE CAPTAINS TABLE ROAST BEEF BUFFET



"Carved Before Your Eyes"

Serving from 4:30-9:30 p.m.

The Captains Table - 8093 Main St., Dexter

Hardwoods Best for Fireplace

"Any kind of wood will burn eventually. But if you want a long-burning, hot fire, choose seasoned hardwoods."

According to Mel Koelling, Extension forester at Michigan State University, the kind of wood and its moisture content are the two big factors in firewood quality. As a general rule, hardwoods—trees that lose their leaves—burn hotter and longer than softwoods—the cone-bearing species. Therefore, seasoned hardwoods—such as oak, hickory, beech, hard maple and American elm—are the preferred woods for firebuilding.

However, if you had to decide between an unseasoned or wet hardwood such as oak or a dry conifer such as pine, you might get along better with the pine.

"Wet, green wood is awfully hard to get started burning," Koelling explains. "You need a hot fire going to dry it out to the point where it will burn. And a small fire like that in a fireplace rarely gets that hot, at least initially."

Burning green wood over a long period of time can also cause a buildup of tar and creosote in your fireplace flue, he points out. A hot fire can ignite this material. In newer homes this will probably pose no problem. But in an older home, the mortar may have cracked or come loose from the bricks, and a chimney fire may grow into a home fire.

Before using a wood stove, fireplace or wood-burning furnace

with an old flue, it's a good idea to have the flue inspected and cleaned or rebuilt, if necessary. Koelling advises. "Afterward use seasoned wood. Hot fires made with dry wood will help keep the chimney clean."

Generally speaking, a home fireplace is more for esthetics than for heat, the specialist observes. Therefore, for most homeowners, it's more important to buy wood that's easy to start than to buy wood because it has a high starting value. Conveniently, seasoned hardwoods give you both ease of starting and plenty of heat.

"Wood should be aged at least six months after cutting before it's used," he says. "Six months of air drying outdoors should get it to about 20 percent moisture. If you're cutting your own wood from live trees, you should be working six months to a year ahead of your needs."

If you're buying wood, you'll have a better chance of getting seasoned wood if you buy in the fall or early winter. By late winter, dealers may have run through their stock and be cutting fresh wood that is high in moisture.

"Whether you're buying wood or cutting your own, be sure to get a stock of small kindling and a mixture of sizes to get your fire started," Koelling suggests. "You can't expect to put several six-inch logs on a pile of newspapers and have them take off and burn. You need a good supply of kindling and smaller logs to get

a fire going before you put on your larger pieces. "Small, dry tree branches and twigs, wood scraps from a lumber yard or construction project, corn cobs and dry pine cones make good starting materials," he says. Or you can split kindling from larger logs.

Start small when building a fire, he advises. You may wish to begin with newspaper and very small kindling, adding larger and larger pieces of wood as the fire takes hold. If the fire is slow to start, add more little kindling. Under no conditions add lighter fluid, gasoline, kerosene or other flammable liquids once the fire has been started. Flames can flash up the stream of liquids once the fire has been started. Flames can flash up the stream of fuel and set off the can in your hands, resulting in serious injury.

"Charcoal lighter fluid can be used in small amounts on kindling to get a fire started," Koelling adds, "but it should never be put on a flame or hot coals." When you go out to buy wood, you're likely to find it sold by either the cord or the face cord. A full cord is 4 feet high, 8 feet long and 4 feet wide. A face cord is 4 feet high, 8 feet long and 16-20 inches wide. Wood may also be sold by the pickup load or stack. What you get in this type of situation depends on the seller's definition. Koelling points

J

Turquoise

Handmade Navajo Indian Jewelry

Sells at

GAMBLES

the Chelsea

December 8-9-10

A new shipment of jewelry selected especially for this show has just arrived. Come and make your Christmas gift selections from Jal Turquoise Shows expanded collection that includes rings, earrings, bracelets, watch bands, necklaces, chokers, pendants and cigarette lighters priced from \$6.00 to \$450.00. The recipients of your selections will know that you appreciate fine gemstones and handcraftsmanship and that you have cared enough to honor them with "one of a kind" fine jewelry originals.

Give Turquoise, America's Popular Gemstone and Birthstone for December.

• Register for free door prize •

Kingman Turquoise
 Sterling Silver
 Signed Pieces • Collectables
 Handcrafted Originals

Cash • Check • Layaway • Gift Certificates

Jal
Turquoise Shows

14900 Harvey Road, Grass Lake, Michigan 49240 • 475-2002
 Jeanne Lehman • Rida Musbach • Leona Beaman

Howell Livestock Auction

Starts 1 p.m. Every Monday
 Mason 676-3400
 The Wise Owl Says Ship to Howell
 Phone 546-2470 Bim Franklin
 Market Report for Nov. 28

CATTLE
 Bulk Gr.-Choice Steers, \$42 to \$43.50
 Few High Choice Steers, \$43.50 to \$44
 Gr.-Choice Heifers, \$38 to \$41
 Fed Holstein Steers, \$32 to \$35
 Ut.-Std., \$30 and down.

COWS
 Heifer Cows, \$28 to \$28
 Ut.-Commercial, \$24 to \$26
 Canner-Cutter, \$20 to \$24
 Fat Beef Cows, \$20 to \$23

BULLS
 Heavy Bologna, \$30 to \$32
 Light and Common, \$30 and down.

FEEDERS
 400-600 lb. Good-Choice Steers, \$35 to \$40
 600-800 lb. Good-Choice Steers, \$34 to \$35
 800-1000 lb. Good-Choice Heifers, \$26 to \$30
 200-500 lb. Holstein Steers, \$28 to \$32
 500-800 lb. Holstein Steers, \$24 to \$28
 Common and medium, \$24 and down.

CALVES
 Prime, \$60 to \$70
 Good-Choice, \$50 to \$60
 Heavy Doers, \$40 to \$50
 Cull & Med., \$30 to \$32
 Calves going back to farms sold up to \$45

SHEEP
 Woolled Slaughter Lambs, Spring Choice-Prime, \$52 to \$54
 Good-Utility, \$48 to \$52
 Slaughter Ewes, \$32 to \$36
 Feeder Lambs, All Weights, \$50 to \$56

HOGS
 210 to 240 lbs., No. 1, \$43 to \$44
 200-250 lbs., No. 2, \$41.50 to \$42
 Heavy Hogs, 250 lbs. up, \$32 to \$40
 Light Hogs, 200 lbs. down, \$38 and down.

SAVES
 Fancy Light, \$32 to \$35
 500-600 lbs., \$33 to \$34
 500 lbs. and up, \$32 to \$33

Bugs and Stags
 All Weights, \$30 to \$31

Feeder Pigs
 100-150 lbs., \$40 to \$45
 150-200 lbs., \$35 to \$40

HAY
 1st Quality, not bale, \$1.50 to \$2.00
 2nd Quality, not bale, \$1.20 to \$1.50



All prize winning dolls, as well as many other entries, can be seen now at the main office of Ann Arbor Federal Savings at Liberty and Division. The remaining dolls can be seen at other AAFFS offices in Ann Arbor, Brighton, Chelsea, Dexter, Manchester, Saline, and Ypsilanti. All dolls will be given to deserving little girls for Christmas.

DRESS-A-DOLL Contest Winners

GRAND PRIZE WINNER: Sherie Bush

1st Place Winners	2nd Place Winners
Character Dress Fancy Dress Alice Lemmer Mrs. Arthur Southwick Nationality Dress Sensible Dress Special Class for 15 & Under Sports	Mona Vreding Arlene Saalbach Charlotte Hetchler Mrs. James Sherman Rose Ann McGarty Susie Davis Sharon Beckel

Honorable mention awards were made to additional contestants.

CONGRATULATIONS

AAFFS ANN ARBOR FEDERAL SAVINGS
 11 OFFICES TO SERVE YOU IN ANN ARBOR, BRIGHTON, CHELSEA, DEXTER, MANCHESTER, SALINE, YPSILANTI
 MEMBER FSIC



Mr. and Mrs. Russell C. Weiner

Karen J. Kohler, Russell Weiner Exchange Vows in Saline Church

Karen Joanne Kohler and Russell Charles Weiner exchanged wedding vows Nov. 18 in St. Andrew's Catholic Church, Saline. The Rev. Fr. Joseph Noelke officiated at the ceremony uniting the daughter of Mr. and Mrs. Clarence Kohler of Saline with the son of Mr. and Mrs. Raymond Weiner of 124 Island Lake Rd. Maid of honor was Julie Austin of Saline, while Randy Weiner of Chelsea, brother of the bride, served as best man. Bridesmaids included Anne Marie Kohler of Saline, sister of the bride; Patsy Robison of Saline; and Renee Glazier of Middleton, cousin of the bride. Ushers were Mark C. Kohler of Saline, brother of the bride; Kevin Wilbur of Chelsea; and Mark Burnett of Chelsea. Ann Weiner of Chelsea, neice of the bridegroom, attended as flower girl. After a reception at Carpenter's Union Hall, Ypsilanti, the

newlyweds departed for a wedding trip to Canada. Upon their return, they will reside in Ann Arbor.



O'NEIL-GUENTHER: Mr. and Mrs. Joseph O'Neil, of 19555 Bush Rd., have announced the engagement of their daughter, Catherine, to Greg Guenther, son of Mr. and Mrs. Roy Guenther, of 19947 Old US-12. A Sept. 2 wedding is planned.

Telephone Your Club News To 475-1371.

Ruth Circle Names New Officers

Members of Ruth Circle of United Methodist Church Women met Wednesday, Nov. 16, in the Crippen Building for a business session and social hour arranged around a Thanksgiving theme.

Mrs. Helen Weiss and Ada Gram, hostesses for the social hour, had decorated tables with centerpieces and other articles appropriate to the holiday observance.

Mrs. Florence Simmons, acting as chairperson opened the business meeting. She called on Wilda Bradley for devotions, which were followed by a history of Thanksgiving in the United States, also presented by Mrs. Bradley.

Marjorie North then recited a memorial for the late Mrs. Elizabeth Kazda, who had been a member of Ruth Circle. Members noted she would be greatly missed and remembered by the circle and her friends.

A motion was made, seconded and carried to allocate \$10 for flowers or a plant for a circle member when necessary, instead of the former amount of \$7.50.

Mrs. Florence Simmons then presented nominations for new officers for the 1978 year. A motion was made, seconded and carried to accept the nominations as presented.

The new officers are: Mrs. Audrey McKee, chairman; Martha Earles, co-chairman; Mrs. Ethel Fleenor, program chairman; Mrs. Esther Kirn, secretary; and Mrs. Elaine McCalla, treasurer.

The monthly letter from the Executive Board was then read to the group.

For Wednesday's program, Mrs. Florence Simmons read selections from "Ideal" and "Response Magazine." Two poems, "Thanking God," and "Thank Your Blessings," were included in the presentation. Mrs. Simmons also related her memories of former Thanksgiving holidays.

The meeting closed with members singing "Bless Be the Tie That Binds Us." Next meeting will be Dec. 21, in the Crippen Building.



DOUGLAS FOREMAN

Chelsea Youth To Appear in U-M Musical

"Applause," a musical written by Betty Comden and Adolph Green, will be staged in the Lydia Mendelssohn Theatre, Ann Arbor, Dec. 1-3, 8 p.m., with Doug Foreman, a 1977 Chelsea High school graduate, appearing in the comic lead part of Buzz Richardson.

"Applause" is an adaptation of the play, "All About Eve," which starred Bette Davis in the movie version, and Lauren Bacall in the Broadway version several years ago.

The musical was selected as this year's freshman-sophomore play by students at the University of Michigan. Scott Eyerle, a music major at U-M, is directing the production, while Andy Kurtzmann, an English major at U-M, is the producer.

Foreman, a U-M freshman majoring in speech and communications, is the son of Mr. and Mrs. Louis Foreman of Gregory.

Historical Society Christmas Bazaar Slated Saturday

One highlight of the Dexter Historical Society's Christmas Bazaar, slated for Saturday, Dec. 3, from 10 a.m. to 4 p.m. at the Dexter Area Museum, will be a miniature village made of gingerbread, upon which tickets will be sold.

Tickets will also be sold on an old-fashioned quilt, now in progress, which will be completed sometime in March. A bake sale will also be featured at the all-day event.

The Dexter Area Museum is located in the old church building on Inverness St.

CAROL'S CUTS
328 Wilkinson

CAREFREE STYLES
475-7094
Appts. Only

North Lake Co-Op Nursery Children Study Indian Life

American Indians have been in the spotlight at North Lake Co-Op Nursery during the month of November.

Nursery children have spent much time discussing how and where the Indians lived, what kinds of clothing they wore, and what their diet consisted of when the first settlers from England came to America's eastern shores.

What interested the nursery children most was the replica of an American Indian tepee which was set up in the nursery school's block room. All of the children enjoyed sitting in the tepee, imagining they were Indians.

Art projects at North Lake Co-Op Nursery during November have followed the American Indian theme with children making Indian vests, necklaces, headdresses, and rocking horses.

To add even more to their study of the early American Indian way of life, the children played with a special Indian play set which was located on the sand table at the nursery throughout the month.

At the end of November, time was spent discussing the origins of Thanksgiving, and making potato turkeys, pilgrim collars, and pilgrim hats.

Susan German Chosen for DAR Award

Susan German, a Chelsea High school senior, has been chosen to receive this year's National Society of Daughters of the American Revolution (DAR) good citizenship award. She was selected for the honor by fellow classmates, faculty members, and administrators at the high school.

The annual award is made on the basis of dependability, service, leadership and patriotism. Also considered in choosing an award recipient were the subject's loyalty and co-operation in the school and community.

Miss German is now eligible to compete for the state DAR citizenship award, and also in a special scholarship competition.

In announcing the award, Susan M. Carter, a counselor at the high school, said: "We are very proud that Susan was selected for this award and are pleased to have such a fine student in our school system."

Miss German is the daughter of Mr. and Mrs. Robert M. German, of 7081 Lakeshore Dr.

CHRISTMAS ART FAIR

The University of Michigan Artists and Craftsman Guild

Saturday, Dec. 3, 10 a.m.-8 p.m.
Sunday, Dec. 4, 10 a.m.-5 p.m.

U-M Coliseum, Ann Arbor
Fifth Avenue at Hill St.



CARRIBEAN CRUISE: Mr. and Mrs. Matthew Villemure, of 334 Washington St., stand aboard the S.S. Emerald Seas, a luxury liner, shortly before sailing on the vessel from downtown Miami, to Nassau and Freeport. In addition to the pool in the background, passengers enjoyed the liner's outdoor French cafe, discotheque, lounges, staterooms complete with closed-circuit television and music, and all meals aboard ship. Upon reaching historic Nassau and modern Freeport, passengers disembarked for shopping, sight-seeing, and a visit to each island's beaches. The daylight sail from Nassau to Freeport also gave passengers an opportunity to bask in the tropical sun. Villemure, employed as service manager by Palmer Ford, was awarded a Caribbean cruise for two as winner of a Customer Relations-Owner Satisfaction Contest conducted by the Ford Parts and Service Division.

CHS Yearbooks Have Arrived

Chelsea High school yearbook staff has announced the arrival of the 1977 "Barker" yearbook.

Distribution of the books will begin with an informal party to night, Dec. 1, 7 p.m. to 9 p.m., in the high school cafeteria. Everyone who ordered yearbooks last year may pick up his or her copy during this event, as well as exchange autographs.

A limited number of extra "Barkers" will also be available for sale at the party.

Those who have ordered yearbooks but are unable to attend tonight's event, may pick up their yearbooks at the high school Monday.

Subscribe today to The Standard!

Drivers Escape Injury in Crash On Jackson Rd.

Two drivers escaped injury Wednesday afternoon, Nov. 23, in a rear-end collision on Jackson Rd., it was reported by the Washtenaw County Sheriff's Department.

According to the report, Gregory Lee Baty, 17, of 2243 Georgetown Blvd., Ann Arbor, was stopped on Jackson Rd. at 1:30 p.m. and preparing to make a right turn into a driveway when he was struck from behind by an automobile being driven by Robert Leroy Heller, 42, of 1610 Guenther, Chelsea, and forced over a stop sign.

No enforcement action was taken against either driver following the mishap.

HAVE YOU BEEN HURT?

sexual assault victims/battered women can get help at the

Assault Crisis Center

- ★ Confidential Assistance
- ★ Counseling
- ★ Assistance With Legal Systems
- ★ Assistance With Other Agencies
- ★ Emergency Housing & Transportation

ALL SERVICES ARE FREE OF CHARGE

Counselors available 24 hours - 668-8888

Business Line - 434-9881, Mon.-Fri., 8-5 p.m.

Pinckney Man Slides Into Tree

Dexter-Pinckney Rd. was the scene of an accident in which a Pinckney man lost control and struck a tree Wednesday evening, Nov. 23, according to the Washtenaw County Sheriff's Department. The report stated that Rowan Edward Rowse, II, 30, of 11111 Patterson Lake Rd., Pinckney, was southbound on Dexter-Pinckney Rd. at 6:15 p.m. and attempting a left turn onto McGregor Rd. when he lost control on wet, gravel-covered pavement and struck a tree on the corner. He emerged without injury, it was reported.

featuring

MEN **WOMEN**

REDKEN

— HOURS —
MON., 9-5 TUES.-FRI., 9-8
SAT., 9-2:30 Closed Sun.

FOR APPOINTMENT Call **475-1671**

107 N. MAIN • CHELSEA

We are proud to announce we now feature

PRINCE MATCHABELLI

WindSong • CACHET
Aviance • AZIZA

All now available at our Cosmetics Counter

CHELSEA PHARMACY
101 N. Main St. Ph. 475-9103

Richard Marks Stained Glass Studio/Gallery

UNUSUAL HAND-CRAFTED STAINED AND BLOWN GLASS GIFTS, LAMPS, AND CUSTOM DESIGNED WINDOWS.

Designer of fine stained glass windows for 25 years.
Largest stock of hand-blown sheet glass in Michigan.
Tools and materials wholesale to professional craftsmen.

302 E. CHICAGO BLVD., TECUMSEH, MICH.
TELEPHONE (517) 423-5858
Open Sundays Until Christmas, 1 to 5 p.m.

Perfection guaranteed

A Keepsake diamond is guaranteed by the famous Keepsake Certificate that assures perfect clarity, precise cut and fine, white color.

Guaranteed trade-in value. Guaranteed perfect diamond. Guaranteed protection against loss. Guaranteed permanent registration. Guaranteed by Good Housekeeping.

Keepsake
Registered Diamond Rings

WINANS JEWELRY

Merkel
HOLIDAY HOUSE BOUTIQUE

Tempus Fugit . . . time to visit Merkel's brand-new-this-year "Holiday House Boutique . . . a very special place where we've gathered a vast array of Christmas gift-ables to make your shopping more festive and convenient . . . everything from \$3 baskets to a magnificent \$1400 Herndon secretary. There are gifts of elegance, gifts of wit and whimsy . . . all to be cherished for a lifetime.

MAY WE SUGGEST: antique spool candle holders, grandfather clocks, table top boxes, fireplace accessories, dolls for children of any age, area rugs, crystal vases, pewter, bentwood hat racks, curio shelves.

Free Gift Wrapping and Delivery.
Use your Mastercharge, BankAmericard or Merkel Credit Plan.
Open Monday and Friday Nights Until 9 p.m.



CHELSEA'S CHARLIE BRIDGES (32) and Jesse Coburn (22) are thrust aside in a Panther charge that results in two more points for Stockbridge during a contest between the two teams Tuesday evening. Although the Bulldogs took a 2-0 lead in the opening moments of the game, that lead was quickly swallowed up by Stockbridge which went on to dominate the contest and finish on top of the 8-57 decision. According to Chelsea Coach Robin Raymond, Stockbridge is favored to take the state title this season.

Spare Tires Stolen from Parked Trucks

Spare tires fitted with wheel rims were stolen from two cars parked in the IPSCO parking lot, at 570 Cleveland St., sometime between 3:30 p.m. and 11:30 p.m. Tuesday, Nov. 22, while the owners of both vehicles were working in the plant.

Don Joseph of Manchester contacted the Chelsea Police Department Wednesday, Nov. 23, to report the theft of one spare Good-year wide-track tire with raised letters, size 10-K, and one white-spoked wheel with a five-bolt pattern which had been removed from his Dodge Ram Charger after his wife, Jean, had parked the vehicle in the IPSCO parking lot before reporting to work for the afternoon shift.

Mrs. Joseph returned to the car upon finishing work and noticed that the tire and wheel were missing. She told police the vehicle had not been locked while left in the parking lot. Value of the missing articles is estimated to be \$100.

In what police suspect is a related incident, Gary Hughes, of Stockbridge, reported Monday that a new Goodyear 10x15 spare tire, a chrome-plated wheel valued at \$75, and a wheel mount were taken from the inside of his 1978 Dodge Ram Charger after his wife Rita, drove the vehicle to work at IPSCO and parked it in the afternoon.

When she returned to the vehicle shortly after 11:30 p.m. she also found the tire, wheel and mount missing. Contrary to circumstances involved in the theft of a tire and wheel from the Joseph vehicle, the Hughes car had been locked. It is unknown how entry was made.

No suspects have been named in either case, both of which remain open pending further investigation.

Hockey Team Blasts Lenawee in 8-1 Win

(Continued from page one)

two periods and held Lenawee to just one goal. He got that goal back, however, at 14:57 of the first period when he picked up an assist on a Chelsea scoring effort.

Brandy Rinehardt took over the goalie spot for the third period and kept Lenawee scoreless for the remainder of the game.

Chelsea opened the scoring with three goals in the first period

while all of Lenawee's goal attempts were sabotaged. At 1:51, Steve Check put the puck in the net, assisted by Mark Stevenson. Then, at 8:30, Stevenson drove the puck home with the assist going to Dennis White. Dave Dawson collected the third Bulldog goal when he took the puck from Dave Baldwin and skated down the ice to score at 14:57.

In the second period, Kevin Houle launched another Chelsea attack, hitting the puck at 8:30 of the period with assists from Pat Stevenson and Steve Check. Lenawee managed its only goal of the game at 12:27 of this period when Bill Baker scored unassisted. The period ended with Chelsea ahead of Lenawee, 4-1.

Chelsea bombarded the Lenawee goal in the third and final period, scoring four times. Knocking in goals for Chelsea were Kevin Houle at 9:12 of the period, assisted by Pat Stevenson; Steve Check at 11:02, assisted by Andy Fischer; Joe Marentette at 11:42, assisted by Gary Keleman; and Pat Stevenson at 13:59, assisted by Dave Dawson.

The Bulldogs' next game will be Sunday, Dec. 4, 6 p.m., against Jackson Western in the Jackson Ice Arena.

Bid Accepted For Building Trades House

At its Nov. 28 meeting, the Chelsea Board of Education accepted the low bid of Chelsea Lumber Co. of \$10,886.20 for material for the high school building trades class to build a new house.

The house will be the fifth the class will build as part of its training.

A brochure advertising for a new superintendent is expected to be completed by mid-December. The brochure will be sent to placement offices at major universities in the Midwest.

A successor is sought for Charles S. Cameron, who has been head of the school system for the past 26 years. Cameron, who will retire June 30, has served the local school system for 41 years, including a stint as high school principal.

Fred Mills, business manager, said a tentative deadline of Jan. 31 has been set for accepting applications for the position. Interviews will be conducted early in February with the new superintendent to be named sometime in the spring.

Girls Basketball

(Continued from page one)

ny Collinsworth with 14. Other Chelsea scorers were Sue Heydlauff with 7 points, Tracy Hawker with 6, Mary Boylan with 4, Sheryl Kiel with 2, and Lori Miles with 1.

Leading rebounders were Nanette Push and Shelley Warren, while Sheryl Kiel, Mary Boylan and Tracy Hawker also helped out on the boards.

Two junior varsity players brought up to the varsity ranks for district tournament play were Patti Hume and Mary Boylan.

Chelsea's next game will be played tonight, Dec. 1, 8:30 p.m., against Tecumseh. If the contest results in another victory for the Bulldogs, they will advance to the finals, scheduled for Friday, Dec. 2, at 7 p.m. All tournament games are being played at Jackson Northwest.

Please Notify Us
In Advance of
Any Change in Address

CHELSEA AUTOMOTIVE

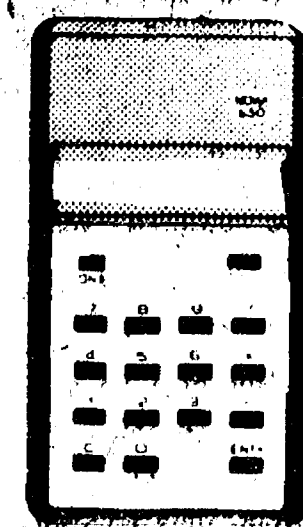
Announces

"LADIES NIGHT"

TUESDAY EVENING, DEC. 13

On Tuesday, Dec. 13, from 7:00 p.m. to 10:00 p.m., we will be open to help you with your Christmas shopping for your husband or boy friend. Mark the date down. Sorry men, only women that evening. If you see something you have been wanting, let her know and maybe she'll buy it for you!

NATIONAL SEMI-CONDUCTOR CALCULATOR

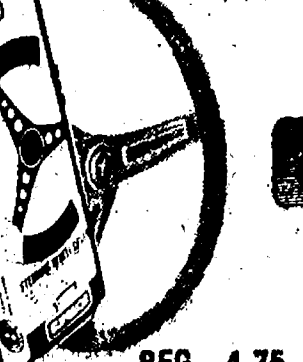


Adds, Subtracts
Multiplies & Divides
Works the Problem
Exactly as you Say It

MODEL 650
9.85 VALUE

366
LIMIT 1

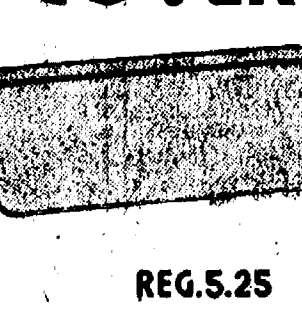
SPORT GRIP STEERING WHEEL COVER



REG. 4.75

349

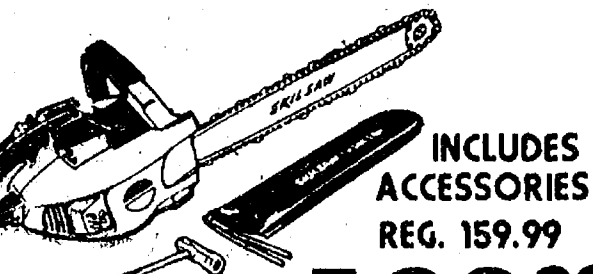
FOX CRAFT FENDER COVER



REG. 5.25

465

SKILSAW 16" CHAIN SAW



INCLUDES ACCESSORIES
REG. 159.99

1 YEAR 1616 WARRANTY 139.99

SKILSAW 3/8 DRILL CORDLESS VARIABLE SPEED REVERSIBLE



REG. 39.99

29.99

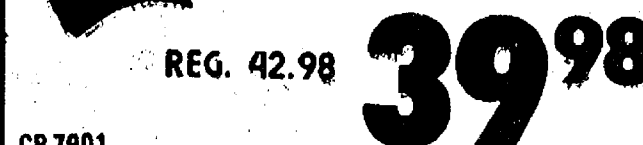
SKILSAW POWER SAW 7 1/4" BLADE



REG. 44.99

34.99

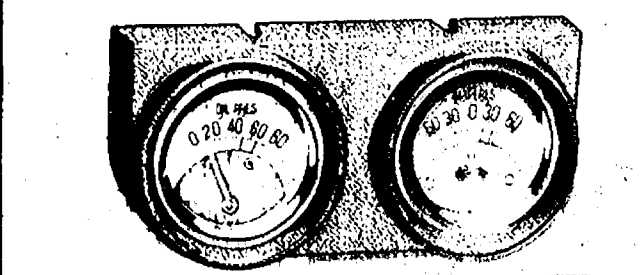
SUN SUPER TACH TACHOMETER



REG. 42.98

39.98

Hawk OIL-AMP GAUGE



REG. 15.98

10.79

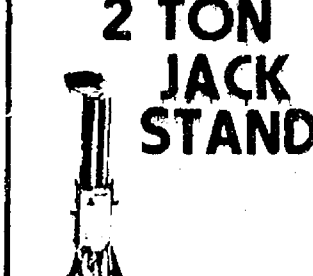
FOX CRAFT 1 1/2 TON JACK STAND



REG. 4.75

3.99 each

FOX CRAFT 2 TON JACK STAND



REG. 7.95

6.97 each

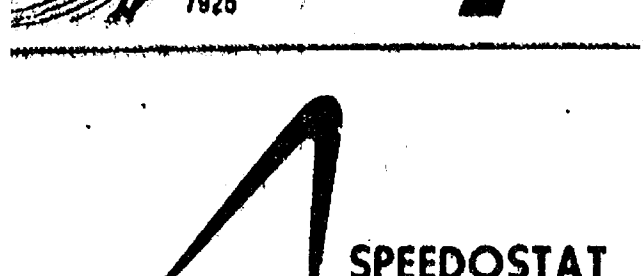
BELDEN OUTDOOR 25 FT. EXTENSION CORD



9.05 VALUE

5.95

BELDEN TROUBLE LIGHT



25 FT. REG. 16.60

7.99

CRUISE CONTROL



111.95 VALUE

99.50

All Other Items in Our Store
Not Shown Here
You Will Receive a
10% DISCOUNT

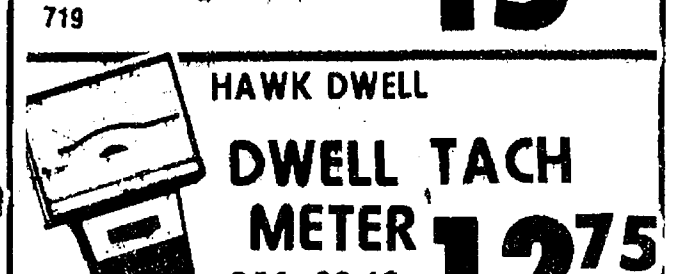
SIGNAL STAT 2 1/2 LB. REFILLABLE FIRE EXTINGUISHER



14.56 VALUE

8.99

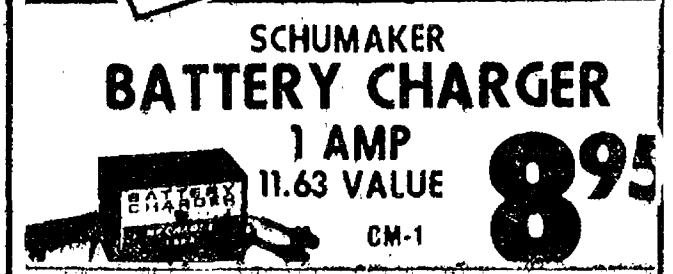
HAWK TIMING LIGHT DC POWER



24.18 VALUE

15.95

HAWK DWELL DWELL TACH METER



REG. 20.60

12.75

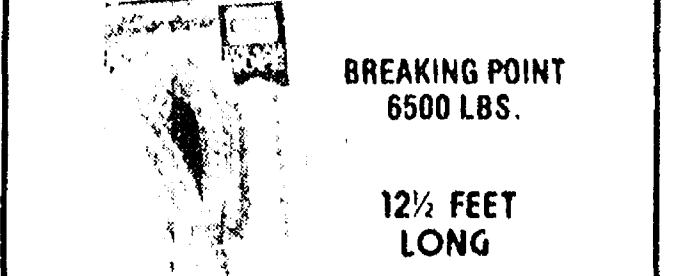
SCHUMAKER BATTERY CHARGER



1 AMP 11.63 VALUE

8.95

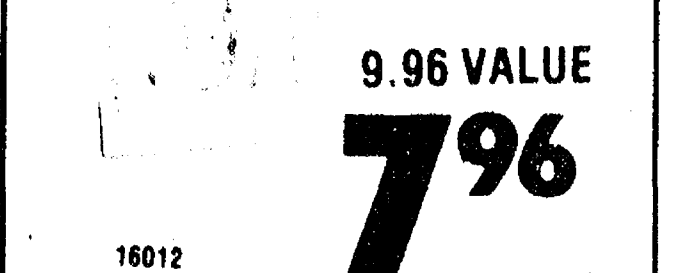
CAR RAMP



2 1/2 TON CAPACITY

18.88

GOODALL TOW ROPE



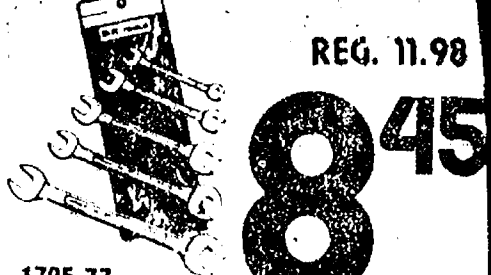
BREAKING POINT 6500 LBS.

12 1/2 FEET LONG

9.96 VALUE

7.96

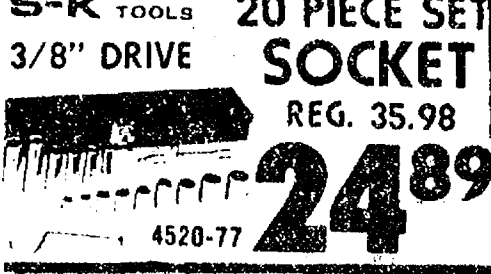
S-K TOOLS 5 PIECE OPEN END WRENCH SET



REG. 11.98

8.45

FOX CRAFT IMPACT DRIVER



REG. 7.25

6.95

S-K TOOLS 20 PIECE SET 3/8" DRIVE SOCKET



REG. 35.98

24.89

CHAMP ITEM 8 PIECE SET DRILL BIT SET



REG. 7.03

5.95

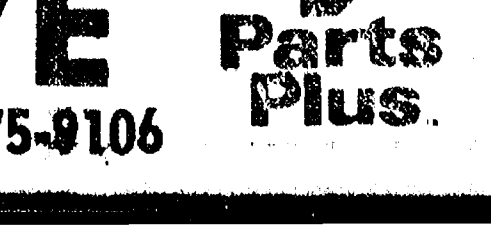
PARTS PLUS CREEPER



REG. 13.99

8.99

FOX CRAFT 1 1/2 TON FLOOR JACK



REG. 89.95

79.95

BANK AMERICARD OR MASTER CHARGE WELCOME

CHELSEA AUTOMOTIVE

1414 S. MAIN, CHELSEA

PHONE 475-9106

Parts Plus

CURTIS MATHES COLOR TV

Sale Now On

4-yr. parts warranty
4-yr. picture tube warranty
4-yr. chassis labor.

TOUCH TUNING
REMOTE CONTROL
COMBINATION COLOR TV
Also Black & Whites
WE TAKE TRADES

LOY'S TV

512 N. Maple Rd., Ann Arbor
Phone 763-4469
Welcome. Bank Financing.
Master Charge & BankAmericard

WE HAVE THE GENUINE



CHELSEA HARDWARE
110 S. MAIN ST. PH. 475-1121

One of the Best Energy Savers of All Time!

Warp's GENUINE FLEX-O-GLASS

CRYSTAL CLEAR, FLEXIBLE, SHATTERPROOF PLASTIC

LET THE SUN WORK FOR YOU!

Make Your Own Storm Windows, Storm Doors, Porch Enclosures!

HOLDS IN HEAT! KEEPS OUT COLD! Save Fuel! Save Money!

SO EASY ANYONE CAN DO IT! JUST CUT FLEX-O-GLASS TO SIZE AND TACK OVER SCREENS OR WINDOW OPENINGS! COSTS SO LITTLE ANYONE CAN AFFORD IT! **49c**

WARP BROS. Chicago 60651. Pioneers in Plastics Since 1924. Hardware, Lumber & Building Supply Stores

Cager of the Week



RANDY HARRIS (24), a guard for Chelsea High's varsity basketball squad, has already distinguished himself as one of Chelsea's leading scorers through the 1977-78 season has been in progress for only one week. A second-year member of the squad, the 5'10", 145-lb. senior has had a long history of basketball success. He was voted Most Valuable Player his freshman year, and looks like a strong contender for the title again this year. Harris collected 15 points for Chelsea in the team's opener against Jackson Northwest Saturday, and was the top Bulldog scorer in Chelsea's encounter with Stockbridge Tuesday, when he collected 13 points. According to Harris, his duties as a guard include "playing good defense and trying to stop the opposing guards from controlling the game." Playing under a new coach this season, the cager admits basketball has become somewhat of a different game. "We haven't adjusted too well at this point," he said of his team, "but we're hopeful it will come in the future." Of Chelsea's first two games this season, Harris said the one against Jackson Northwest was "better played." "We also had quite a few more opportunities to score in that one," he noted. In addition to basketball, Harris runs track for Chelsea High. He is the son of Mr. and Mrs. Ronald Harris, of 175 Park St.

Wrestlers Pin NW...

(Continued from page one)

while Bart Bauer recorded his first victory at 138 lbs., when he came up with a pin in the third period. Chris Unstead then picked up a forfeit victory at 145 lbs.

In other varsity action, Terry Thompson scored a second period pin at 135 lbs.; Brian Van Keese collected a 13-8 victory at 160 lbs.; Todd Headrick started slowly but recorded an 8-0 decision victory at 175 lbs.; and Rick Risner made a spirited effort at 191 lbs., but lost by a pin.

Heavyweight Tom Barsis scored a first period pin to close out the contest.

On the junior varsity front, opening meet results were dramatically different as Bill Freeman was the only Chelsea wrestler to win a match. He triumphed over his opponent with a first period fall.

Other JV results included a tough 2-0 loss by Eric Headrick, while losing by falls were Jeff Robbins, Jeff Osintski, Craig Sturgeon, Eric Gaken and Chan Lane.

Repeating a statement made in his pre-season outlook, Coach Barsis said, "Many of these young men have never been on the mat before, so it will be a while before they start looking good; however, each meet gives the wrestler experience, and that is what they really need."

Varsity Cagers...

(Continued from page one)

He gave some insight into Chelsea's loss when he described the power of the Stockbridge squad. "They went to the quarter finals during last year's state tournament and have four starters back this season," he said. "They have a good chance of winning the state title this year, but we hope to be at their stage at the end of the season."

Statistically, Stockbridge was way ahead of Chelsea Tuesday. In turnovers alone, the Bulldogs committed 26, compared to the Panthers' 13.

Leading scorers for Chelsea in the contest were Randy Harris with 13 points, Jerald Benjamin with 12, Jesse Coburn with 11, and Mark Feeney with 8. Coach Raymond was particularly impressed with Coburn's performance. "He came off the bench and did a good job," the coach said.

High rebounders were Benjamin with 11, Coburn with 8, and Charlie Bridges with 7.

Now 0-2 on the season, Chelsea will travel to Novi Friday, Dec. 2, for its next encounter, beginning at 8 p.m. Chelsea's junior varsity squad will also be playing at Novi Friday, beginning at 6:30 p.m.

Biddy Basketball

(Continued from page one)

each child registered. This registration should take no longer than five or 10 minutes, and each child's parents should be present for registration. There will be no basketball played at this time. Cost will be \$5 for the program.

The 1977-78 biddy basketball schedule is as follows:

Dec. 3—Registration at Beach Middle school.

Dec. 10—Basketball Skill Day at Beach.

Dec. 17—Coaches Clinic at Beach.

Dec. 24—Vacation.

Dec. 31—Vacation.

Jan. 7—First Practice.

Jan. 14—Game.

Jan. 21—Game.

Jan. 28—Game.

Feb. 4—Game.

Feb. 11—Game.

Feb. 18—Game.

Feb. 25—Game.

Mar. 4—Contest Day.

WBA, 9:30 to 11:00 at Beach Middle school.

ABA, 11:00 to 12:30 at Beach Middle school.

NBA, 10:00 to 12:00 at Chelsea High school.

Immunization against rubella (German measles) can spare the unborn baby severe, sometimes fatal birth defects, according to The National Foundation-March of Dimes. Five million women of childbearing age in the U.S. have no immunity to this infection.

Telephone Your Club News To 75-1371.



LT. DAVID P. MCGIBNEY

David McGibney Earns Commission In Air Force

David P. McGibney, son of Mr. and Mrs. Philip F. McGibney, III, of 411 W. Middle St., Chelsea, has been commissioned a second lieutenant in the U.S. Air Force upon graduation from Officer Training School at Lackland AFB, Tex.

Lieutenant McGibney, selected through competitive examination for attendance at the school, now goes to Keesler AFB, Miss., for training and duty as a communications systems officer.

The lieutenant is a 1966 graduate of Chelsea High school and received a BS degree in chemistry and mathematics in 1971 from Central Michigan University.

His wife, Laura, is the daughter of the Rev. and Mrs. Richard Clemans of St. James, Mo.

every home needs a La-Z-Boy®



... and we have lots of La-Z-Boys in our store looking for a home...

all at low
**LOW
LOW
LOW**
discount
prices

Make your selection and lay away now for Christmas... wall recliners, racker recliners, swivel rockers

Merkel

HOME FURNISHINGS

Open Monday & Friday until 9 p.m.

Ph. 475-8621

Standard Want Ads Will Sell Your Unwanted Items

COMPLETE SUPERMARKET

FRESH MEATS
U.S.D.A. CHOICE
BEEFCOLD BEER
WINE
LIQUOR

Jiffy market

Big Enough To

Serve You . . . Small Enough To Know You!

HOURS: 7 DAYS A WEEK
7 a.m. to 10 p.m.WE ACCEPT
U.S.D.A. FOOD STAMPSSALE PRICES EFFECTIVE
Thurs., Dec. 1 thru Sun., Dec. 4

MARATHON GAS

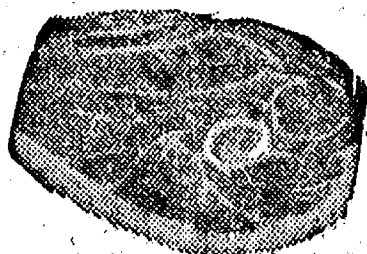
REG. GAS **59.9** gal.

Including all taxes

YOUNG, TENDER, LEAN PORK

PORK STEAK..

Cut from Lean Butts

99¢ lb.

PORK ROAST

Boston Butt Lb.

89¢

PORK CUTLETS

Lb.

\$1.19

PORK SAUSAGE

Lb.

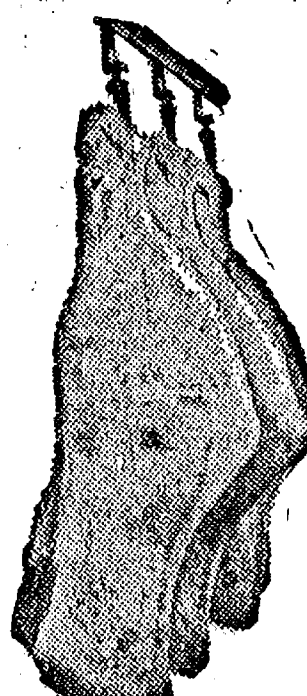
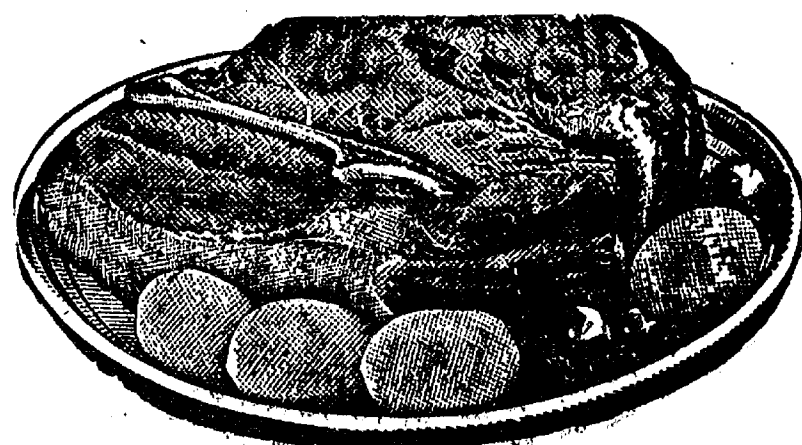
99¢

PORK BUTT

Lb.

85¢

JIFFY MARKET MEAT SERVICE

U.S.D.A.
CHOICE
BEEFSIDES - FRONTS - HINDS
WHOLE RIBS - WHOLE LOINSCUSTOM CUTTING - WRAPPING - FREEZING
QUICK SERVICE ON BUTCHERING
YOUR BEEF OR OURSCHUCK ROAST **69¢** lb.

U.S.D.A. CHOICE BEEF

CENTER CUT CHUCK ROAST Lb. **79¢**

U.S.D.A. CHOICE BEEF

ENGLISH CUT ROAST... Chuck Cut Lb. **\$1.09**

U.S.D.A. CHOICE

ARM ROAST... Lb. **\$1.09**

U.S.D.A. CHOICE BEEF LEAN

SHORT RIBS OF BEEF Lb. **59¢**

FARMER PEET

RING BOLOGNA

99¢ lb.

Young, Tender, Sliced

BEEF LIVER

49¢ lb.

USDA CHOICE

GROUND CHUCK

99¢ lb.

USDA CHOICE

GROUND ROUND

\$1.09 lb.

FRESH

PORK HOCKS

49¢ lb.

CORTLAND VALLEY

SAUERKRAUT

2-Lb. Pkg. **39¢**

U.S.D.A. CHOICE

BONELESS BEEF STEW

\$1.09 lb.

FARMER PEET

SKINLESS FRANKS

1-Lb. Pkg. **79¢**

U. S. NO. 1

Red Delicious

APPLES

3-Lb. Bag

79¢

FARM MAID

Homogenized

FRESH MILK

Gal. Crtn. or Plastic

\$1.39

EVERY DAY

LOW PRICE!!

LOW-FAT MILK

Gal.

98¢

NABISCO

PREMIUM

CRACKERS

1-Lb. Box

59¢

Wonder Country Style

WHITE BREAD

1-Lb., 4-Oz. Loaf

39¢

FARM MAID

SPECIALS

1/2-PINT Whipping Cream.. **43¢**1 QT. Egg Nog... **69¢**1-LB. CRTN. Cottage Cheese... **59¢**

GAS PUMPS & STORE OPEN 7 a.m. to 10 p.m. 7 Days a Week — U. S. Authorized Food Stamp Store — Daily & Sunday Papers

★ District Court Proceedings ★

Week of Nov. 22-28

Randall Trinkle pled guilty to charges of speeding. Fines and costs, \$50.

Mark Sizeman pled guilty to charges of no proof of insurance or registration in his possession. Fines and costs, \$15.

Glen Gunton pled guilty to charges of improper lane change. Fines and costs, \$25.

Diane Finkbeiner pled guilty to charges of making an improper turn. Fines and costs, \$35.

James Hynes pled guilty to charges of improper overtaking and passing on the right. Fines and costs, \$35.

Mark Kingston pled guilty to charges of speeding. Fines and costs, \$47.

Kenneth Beekel was sentenced to pay fines and costs of \$250, to six months probation, and to the Alcohol Safety Action Program on charges of impaired driving.

Peter A. Raft was sentenced to pay fines and costs of \$100, and to pay restitution costs of \$368.97 to the City of Saline for police car damages on charges of failing to stop in a clear and assured distance.

Floyd L. McFall pled guilty to charges of driving under the influence of liquor. He was referred to probation, to the Alcohol Safety Action Program, and will be sentenced Feb. 6.

Mark S. Miller pled guilty to charges of disorderly person. Fines and costs, \$50.

Sally Jo Kennedy pled guilty to charges of speeding. Fines and costs, \$82.

William E. Suiter pled guilty to charges of no rear license plate. Fines and costs, \$65.

Judy McMillan pled guilty to charges of impaired driving. She was referred to probation, to the county substance abuse program, and will be sentenced Jan. 31.

Susan Malinczak pled nolo contendere to charges of driving under the influence of liquor. She was referred to probation, to the Alcohol Safety Action Program, and will be sentenced Jan. 31.

Stephen A. Gurnoe pled guilty to charges of driving under the influence of liquor. He was referred to probation, to the Alcohol Safety Action Program, and will be sentenced Feb. 3.

John A. Kovinich pled guilty to charges of possession of fireworks. Fines and costs, \$25.

Jesse V. Griffin appeared in court on a bench warrant for failing to pay fines and costs on previous charges of improper registration. He was sentenced to five days in jail.

James B. Sullivan pled nolo contendere to charges of driving under the influence of liquor. He was referred to probation, to the Alcohol Safety Action Program, and will be sentenced Feb. 6.

Clifford Mills was sentenced to pay fines and costs of \$250, to the Alcohol Safety Action Program, and his operator's license was restricted on charges of driving under the influence of liquor.

Alan B. Bignell was found guilty on charges of speeding. He was sentenced to pay fines and costs of \$64, and to one-year probation.

John L. Jensen was sentenced to pay fines and costs of \$250 on charges of impaired driving.

Alice L. Holliverda pled guilty to charges of violating the basic speed law with an accident resulting. Fines and costs, \$50.

Alan B. Bignell was found guilty on charges of fleeing and eluding a police officer. He was sentenced to 30 days in jail.

Christopher A. White was found guilty of impaired driving. He was sentenced to pay fines and costs of \$401, to 18 months probation, and to the Alcohol Safety Action Program.

Kathleen Blaylock appeared in court on a bench warrant for failing to pay fines and costs on a previous charge of possession of open intoxicants in a motor vehicle. She was sentenced to pay fines and costs of \$50, to pay \$25 additional costs, and to three days in jail, or to 20 days in jail.

Jonathon Rohde appeared in court on a bench warrant for failing to pay fines and costs on a previous charge of drunk and disorderly. He was sentenced to pay fines and costs of \$50, to pay \$25 additional costs, and to three days in jail, or to 20 days in jail.

Jonathon Rohde pled guilty to charges of drunk and disorderly. He was sentenced to 30 days in jail.

Garth M. Bolgos pled guilty to charges of driving with license suspended. He was sentenced to pay fines and costs of \$75 and to three days in jail, or to 15 days in jail.

John A. Petty pled guilty to charges of reckless driving. He will be sentenced Feb. 7.

Raymond D. Stanley pled guilty to charges of driving under the influence of liquor. He was sentenced to pay fines and costs of \$200, and his operator's license was restricted.

Thomas D. Partridge pled guilty to charges of impaired driving. He was sentenced to pay fines and costs of \$400 and to 20 days in jail, or to 60 days in jail.

Lucas C. Gauss appeared in court on charges of criminal sexual conduct. He waived a preliminary examination and will be arraigned in Circuit Court, Ann Arbor, on Dec. 1.

Carolyn Helfrich was found guilty on charges of driving under the influence of liquor. She was sentenced to pay fines and costs of liquor. She was sentenced to pay fines and costs of \$200, and her operator's license was revoked.

Clyde L. Wheeling was found guilty on charges of driving under the influence of liquor. He was sentenced to pay fines and costs of \$300, to 18 months probation, and to the Alcohol Safety Action Program.

Daniel C. Skodak was found guilty of violation of probation on charges of failing to stop at the scene of a property damage accident, and driving with license suspended. He was sentenced to 90 days in jail.

Brian W. Ballard was found guilty on charges of driving with license suspended. He was sentenced to pay fines and costs of \$75 and to three days in jail, or to 20 days in jail.

Troy L. Lewis was sentenced to pay fines and costs of \$100, and to pay restitution costs to Amtrak on charges of failing to stop at a railroad crossing.

John A. Murphy was sentenced



-AN EXUBERANT SWIM TEAM begins a wild demonstration of enthusiasm by tossing Coach Larry Reed and each other into the Beach Middle school pool to celebrate the end of a championship season. Chelsea High's girls varsity swim team took the league title this year with an 11.2 record.

to pay fines and costs of \$350, and to one year probation on charges of impaired driving.

David Lindemulder was sentenced to pay fines and costs of \$350, and to one year probation on charges of impaired driving.

Raymond Oglesbee pled guilty to charges of assault and battery. He will be sentenced Feb. 2.

Steven H. Lyster was sentenced to pay fines and costs of \$100, and to six months probation on charges of reckless driving.

Raymond Oglesbee pled guilty to charges of assault and battery. He was sentenced to pay fines and costs of \$205, to one year probation, and to 30 days in jail.

John Griffith pled guilty to charges of driving under the influence of liquor. He was sentenced to pay fines and costs of \$250, and his operator's license was restricted.

Anthony Skodak was found guilty on reduced charges of impaired driving. He was sentenced to pay fines and costs of \$200, to six months probation, and to six sessions of the Alcohol Safety Action Program.

League Swim Title...

(Continued from page one)

Chelsea also dominated the diving competition as Cathy Volta took 1st, Michelle Alexander, 2nd, Michele Clerk, 5th, and Molly Bacon, 10th.

In the 100-yd. butterfly, Chelsea was led by Sara Borders, 1st, Teresa Degener, 5th, and Kristi Fahrner, 9th. Shelly Springer took top honors in the 100-yd. freestyle, followed by Shannon Springer in 4th and Dawn McDowell in 6th place.

Sue Cobb was the first Chelsea swimmer across the finish line in the 500-yd. freestyle, and placed 3rd in the event. Also placing for Chelsea in the 500-yd. freestyle were Annette Kuhl, 6th, Patti Schumann, 8th, and Jane Weisner, 9th.

The 100-yd. backstroke was paced by Michelle Alexander, 5th, Lisa Radke, 8th and Marcia Warren, 12th, while in the breaststroke, Chelsea had four more placers as Nancy Heller finished 2nd, Teresa Degener, 4th, Shannon Culver, 5th, and Michele Clark, 7th.

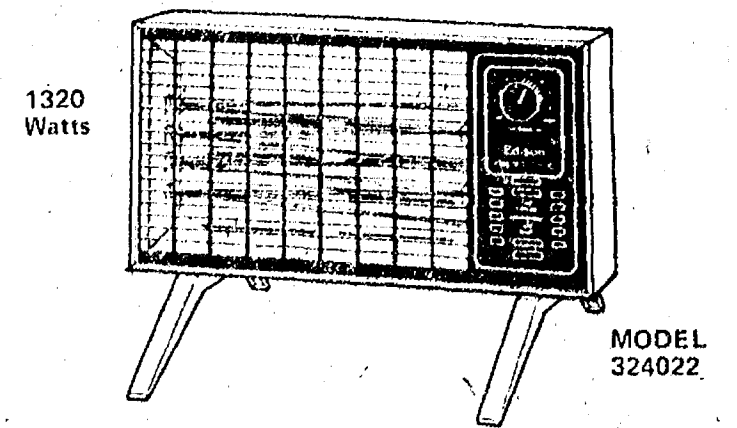
The final event in the invitational was the 400-yd. freestyle relay. Chelsea's A team, composed of Shannon and Shelly Springer, Lisa Radke and Sue Cobb, took 2nd place, and the B team, composed of Patti Schumann, Dawn McDowell, Jane Weisner and Annette Kuhl, followed in 6th place.

In this meet, 19 of Chelsea's 20 swimmers scored at least once, and only one of the swimmers is a senior," Coach Reed noted.

Members of the team will now be joining the Chelsea Aquatic Club, and will work toward AAU (Amateur Athletic Union) and Junior Olympics competition. Coach Reed encourages any girls who would like to go out for swimming to do so by joining the Aquatic Club.

INSTANT HEAT MAKES THE DIFFERENCE

Edison RADIANT HEATER



\$19.95

This New Portable Slim Line Heater is a real space saver—only 15 1/4" long, 10" high and 8" deep including the legs. It turns out a high-volume of circulated heat with instant heat elements and forced circulation, for those areas where extra heat is needed. The heater features a wide range automatic thermostat to maintain the temperature selected. Finger-proof grille. Built-in tip-over safety switch and a fold-away carrying handle. The heater finish is buckskin and black.

HEYDLAUFF'S

113 N. Main St., Chelsea Ph. 475-1221

A Standard Want Ad Gets Results!

CHRISTMAS SALE

Check Our Christmas circular for gift savings.

New Merchandise Each Week.

Chelsea PRO Hardware

110 S. Main St. Phone 475-1121

Looking for the OLD FASHION CHRISTMAS SPIRIT ... Shop in Chelsea!



Stores Will Be Open 12 Nights Until 8:30 p.m.

Friendly Personnel

★ FREE GIFT WRAPPING (in most stores)

★ Christmas Carol Playing in the Streets

★ AMPLE PARKING

★ NO WAITING IN LINES

DECEMBER 1977						
SUN.	MON.	TUES.	WED.	THURS.	FRI.	SAT.
Friendly, Courteous Service					25	26
27	28	29	30	1	OPEN 2 'Til 8:30	3
4	5	6	7	8	OPEN 9 'Til 8:30	10
11	OPEN 12 'Til 8:30	OPEN 13 'Til 8:30	OPEN 14 'Til 8:30	OPEN 15 'Til 8:30	OPEN 16 'Til 8:30	17
18	OPEN 19 'Til 8:30	OPEN 20 'Til 8:30	OPEN 21 'Til 8:30	OPEN 22 'Til 8:30	OPEN 23 'Til 8:30	OPEN 24 'Til 6:00
25	26	27	28	29	30	31

Santa Will Meet Us on Nov. 26 Dec. 10 Dec. 17 from 1 to 3 p.m. at 116 N. Main (Longworth Plating)

★ FREE TREATS for KIDDIES

CHELSEA BUSINESS ASSOCIATION

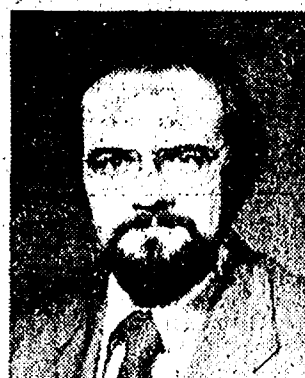
"I'LL THINK ABOUT RETIREMENT ... ONCE I GET THAT RAISE ONCE THE HOUSE IS PAID OFF ONCE THE KIDS ARE THROUGH COLLEGE"

Retirement seems like a good thing to put off, especially when so many other things seem so much more urgent right now.

But there are a lot of people counting on you, and they will still be counting on you when retirement arrives. Farm Bureau can help you be ready.

The Individual Retirement Plan offered by Farm Bureau Insurance Group allows you to build for retirement—and do it partly with tax dollars.

Let us help build that future, by setting up just the right IRP plan for your family.



Dave Rowe

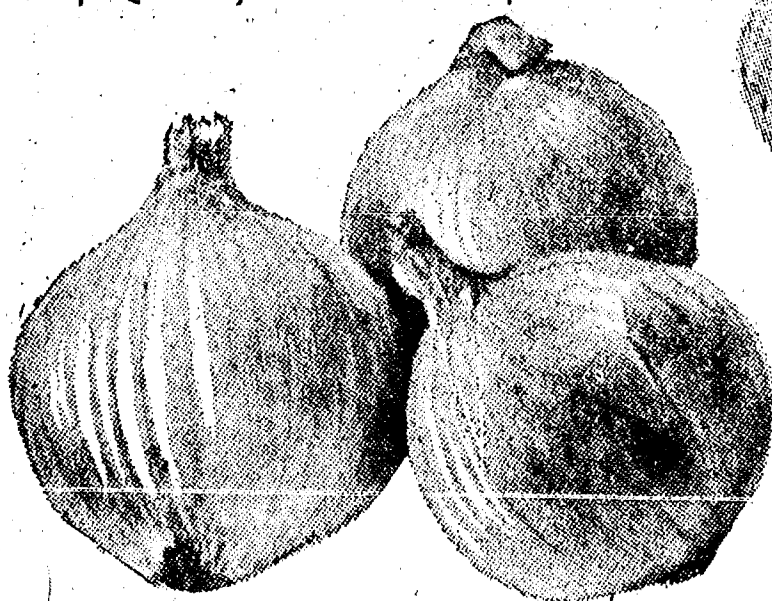
We're right in Chelsea at 107 1/2 South Main Street. Call us at 475-8065.

FARM BUREAU INSURANCE GROUP

Farm Bureau Mutual • Farm Bureau Life • Community Service Insurance

WINTER POTATOES

Top Quality - Good Keepers



GRAVE BLANKETS CEMETERY VASES

Semi-Load of Indian River Citrus Arriving Soon.

ONIONS SQUASH

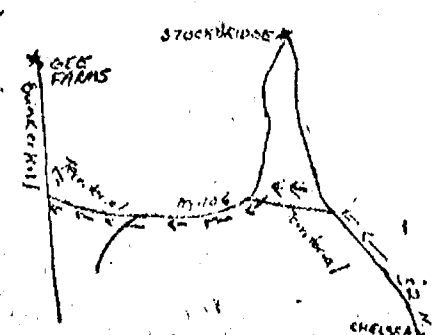
By the Bushel

Xmas Trees Dec. 1st.

FARM BAKED DONUTS - BREAD

GEE FARMS

PHONE (517) 769-6772 14928 BUNKER HILL RD. STOCKBRIDGE



"What's cooking? In Michigan" by Carl B. Olson Michigan Dept. of Agriculture

Most of Michigan's crops are in from the fields, and Mother Nature is getting everything ready for a long winter's nap. It's rather sad to see it happen, but at least we can look forward to spring with its revival.

If you were a busy canner during the fall and put up lots of tomatoes, I'd like to share one of my favorite childhood dishes with you. My mother made tomato soup for me, and I still have the recipe.

Heat about two cups of canned tomatoes to boiling and add just a pinch, one quarter teaspoon, of baking soda. Reduce the heat until the tomatoes are just at the simmer point and then add one and one-half cups of warm milk.

Heat all this again, but don't let it boil or the mixture will curdle. Add one teaspoon of sugar and serve at once while it's hot enough to "take off the chill." It might need a little salt and pepper but let the lucky ones who eat it do their own thing with the seasonings.

It's interesting that Michigan's tomato crop is worth more than \$10 million annually. According to Michigan Department of Agriculture figures, we grew almost 74 thousand tons of tomatoes which went to processors and another 409 tons for the fresh market.

Our state normally ranks seventh nationally in fresh market and sixth in processing tomatoes each year.

That's a lot of tomatoes; and I have a feeling, after you've tried this tomato soup recipe, the amount of fresh tomato sales is going to go up.

The farmer and rancher receives an average of 43 cents out of each dollar spent for farm-grown food. The balance of the dollar represents the labor and other costs involving in transporting, processing and distributing the food. Prices received by cattlemen are determined strictly by supply and demand at the time of sale. That is why prices fluctuate with changes in supply. Agriculture is not a margin-added business where margins are added to costs of materials, like conventional manufacturing and merchandising business. However, this strictly free market system has helped bring a doubling of beef production since 1954, despite discouraging financial results at times.

Residential • Commercial REMODELING FREE ESTIMATES Ib V. JENSEN and SON LICENSED BUILDER 378 Spring Lake Drive Chelsea, Mich. PHONE 475-1820

BOWLING NEWS

Chelsea Lanes Mixed

Standings as of Nov. 23

	W	L
Hawley Truck Repair	55	29
Wire & Fire	54	30
Ken's Glass	46	38
Accra Gage	46	38
Fox Point Flashes	46	38
The Bandits	42	42
Roadrunners	40	44
Federal Screw Outlaws	39	45
VFW	39	45
Ann Arbor Centerless	39	45
Fireballs	38	46
The Question Marks	37	47
Bollinger's Sanitation	36	48
Get Downers	31	53

Chelsea Suburban

Standings as of Nov. 23

	W	L
Dairy Queen	73	31
Frisinger Realty	70	34
Mark IV Lounge	60	44
Fletcher Mobil	54	50
Dana Dee-Lites	54	50
Ricardo's	52	52
Waterloo Garage	51	53
Chelsea Drug	50	54
Chelsea State Bank	50	54
Dancer's	46	58
State Farm	36	68
Chelsea Assoc. Bulklers	28	76

Women's Bowling Club

Standings as of Nov. 23

	W	L
Washtenaw Engineering	33 1/2	14 1/2
Jiffy Mixes	30	18
Wolverine Bar	30	18
Chelsea Milling	28	20
Wolverine Supply	28	20
Parish Cleaners	27	21
Rose Jack Farms	27	21
Norris Electric	25	23
Thompson Pizza	24 1/2	23 1/2
Palmer Ford	24	24
Good Time Girls	23	25
Laura's Beauty Salon	21 1/2	25 1/2
Lloyd Bridges Chevrolet	20 1/2	27 1/2
Heller Electric	19 1/2	27 1/2
Klink Excavating	18	29
Rosentretter Brothers	18	29
D D DeBurring	16	29
Chelsea Card & Gift	15 1/2	32 1/2

SERVING SANDWICHES

from 11:00 a.m. till 2:00 a.m. Mon. thru Sat.
Open Sunday 12:00 Noon Till 11 p.m.

BEER & WINE CARRY-OUT FOOD CARRY-OUT

MARK IV LOUNGE

1180 M-52 Phone 475-1951 Chelsea

OPEN BOWLING

MONDAY thru FRIDAY

10:30 a.m. to 6 p.m.

SATURDAY

11 a.m. to 12 midnight

SUNDAY

12 noon to 5:30 p.m.

CHELSEA LANES, Inc.

1180 M-52 Ph. 475-8141



CHELSEA FORWARD Charlie Bridges (32) ignores the flailing arms of a Panther guard and takes aim just before releasing the ball for another Chelsea basket in Tuesday night's game with Stockbridge. Although the Bulldogs put up a good fight, they were defeated by Stockbridge, 57-84, for their second loss of the season. Chelsea Coach Robin Raymond called Stockbridge a better team than Chelsea at this point in the season, but expects the Bulldogs to be in the Panthers' class by the end of the basketball year.

Charlie Brown & Snoopy Peanut League

Standings as of Nov. 26

	W	L
Dana Chargers	31	5
Snoopy Raiders	23	13
Red Barons	22	14
Bowling Bulldogs	20	16
Bad News Bears	16	20
Super Stars	13 1/2	22 1/2
Road Runners	11 1/2	24 1/2
Slowpokes	14	30
Rug Rats	12	32

Senior House League

Standings as of Nov. 28

	W	L
Captains Table	61	23
Schneider's Grocery	58	26
Mark IV Lounge	56	28
Wash. Crop Service	54 1/2	29 1/2
Chelsea Grinding	51	33
Sylvan Center	49	35
Bauer Builders	48	36
Village Motors	47	37
McCalla's Feeds	44 1/2	39 1/2
S. J. Custom Service	44	40
Wolverine Tavern	44	40
Frank Grohs Chevrolet	43	41
K. of C.	42	42
Steele's Heating	35	49
Gambles	27	27
Walt's Barber Shop	25	59
Central Fibre	19	65
Deansburro	8	78

525 and over series: M. McCallister, 598; W. Beeman, 572; P. Kelly, 577; J. Harok, 574; D. Buku, 531; R. Kiel, 531; M. Poertner, 556; N. Fahrner, 535; C. Stapish, 545; J. Stoffer, 563; F. Modrzewski, 570; B. Faron, 531; D. Pasquantonio, 547; H. Burnett Jr., 566; G. Biggs, 552; B. Ervin, 574; W. Brown, 566; D. Murphy, 568.

210 and over games: G. Biggs, 217; B. Ervin, 211; D. Kern, 223; D. Murphy, 219; F. Modrzewski, 212; M. McCallister, 214; P. Kelly, 225; J. Harok, 219; M. Poertner, 212; J. Stoffer, 224; H. Burnett Jr., 231.

400 series: S. Weston, 412; D. Haller, 474; D. Dault, 410; M. Brown, 434; D. Clark, 418; S. La Roche, 498; D. Messing, 406; S. Centilli, 498; K. Hermon, 421; M. Herrin, 418; D. Thompson, 446; M. Friday, 488; G. Wheaton, 448; M. O'Donnell, 446; Z. Jobe, 420; S. Roehm, 412; G. Haskell, 448; E. Heller, 462; B. Robinson, 402; J. Sweet, 421; M. Usher, 510.

Games 140 and over: C. Kuzon, 149; S. Weston, 149; L. Haller, 154; S. Dault, 154; A. Vander Ward, 142; J. Barkley, 153; M. Brown, 150; 163; D. Clark, 145; 143; S. La Roche, 192, 146, 158; D. Messing, 154, 148; S. Centilli, 161, 164, 144; W. Picklesimer, 143; K. Hermon, 150, 141; E. Williams, 145; J. Sweet, 171; B. Tison, 143; M. Herrin, 160; D. Thompson, 188; S. Friday, 174, 184, 140; G. Wheaton, 180; 159; M. O'Donnell, 155, 148, 143; Z. Jobe 147, 142; S. Roehm, 143, 143; G. Haskell, 150, 154, 144; M. Usher, 151, 175, 184; R. Forner, 141; E. Heller 186, 150; B. Robinson, 144.

525 and over series: M. McCallister, 598; W. Beeman, 572; P. Kelly, 577; J. Harok, 574; D. Buku, 531; R. Kiel, 531; M. Poertner, 556; N. Fahrner, 535; C. Stapish, 545; J. Stoffer, 563; F. Modrzewski, 570; B. Faron, 531; D. Pasquantonio, 547; H. Burnett Jr., 566; G. Biggs, 552; B. Ervin, 574; W. Brown, 566; D. Murphy, 568.

210 and over games: G. Biggs, 217; B. Ervin, 211; D. Kern, 223; D. Murphy, 219; F. Modrzewski, 212; M. McCallister, 214; P. Kelly, 225; J. Harok, 219; M. Poertner, 212; J. Stoffer, 224; H. Burnett Jr., 231.

400 series: S. Weston, 412; D. Haller, 474; D. Dault, 410; M. Brown, 434; D. Clark, 418; S. La Roche, 498; D. Messing, 406; S. Centilli, 498; K. Hermon, 421; M. Herrin, 418; D. Thompson, 446; M. Friday, 488; G. Wheaton, 448; M. O'Donnell, 446; Z. Jobe, 420; S. Roehm, 412; G. Haskell, 448; E. Heller, 462; B. Robinson, 402; J. Sweet, 421; M. Usher, 510.

Games 140 and over: C. Kuzon, 149; S. Weston, 149; L. Haller, 154; S. Dault, 154; A. Vander Ward, 142; J. Barkley, 153; M. Brown, 150; 163; D. Clark, 145; 143; S. La Roche, 192, 146, 158; D. Messing, 154, 148; S. Centilli, 161, 164, 144; W. Picklesimer, 143; K. Hermon, 150, 141; E. Williams, 145; J. Sweet, 171; B. Tison, 143; M. Herrin, 160; D. Thompson, 188; S. Friday, 174, 184, 140; G. Wheaton, 180; 159; M. O'Donnell, 155, 148, 143; Z. Jobe 147, 142; S. Roehm, 143, 143; G. Haskell, 150, 154, 144; M. Usher, 151, 175, 184; R. Forner, 141; E. Heller 186, 150; B. Robinson, 144.

525 and over series: M. McCallister, 598; W. Beeman, 572; P. Kelly, 577; J. Harok, 574; D. Buku, 531; R. Kiel, 531; M. Poertner, 556; N. Fahrner, 535; C. Stapish, 545; J. Stoffer, 563; F. Modrzewski, 570; B. Faron, 531; D. Pasquantonio, 547; H. Burnett Jr., 566; G. Biggs, 552; B. Ervin, 574; W. Brown, 566; D. Murphy, 568.

Nite Owl League

Standings as of Nov. 28

	W	L
Norm's Body Shop	61	23
VFW	58	26
Nu-Yu Boutique	56	28
Ganja Oil	54	30
Thompson's Pizza	51	33
K. of C.	47	37
Chelsea Automotive	47	37
Mark V	41	43
Dahl Oil	41	43
Chelsea Finance	40	44
Doug's Painting	38	46
Ted's Waterloo Garage	37	47
Hanco Sports Center	34	50
Cavanaugh Lake Store	33	51
Al's TV	30	54
A. D. Mayer Agency	30	54
Alley Rats	30	54
Fitzsimmons Excavating	28	56

200 games: J. Push, 200; D. Thompson, 225; K. Platt, 228; B. Snyder, 212; D. Heeter, 202; O. Hansen, 212; J. Spaulding, 212; F. Moorzejewski, 205; A. Sias, 203.

500 series: D. Williams, 527; D. Alexander, 510; C. Schanz, 501; J. Push, 522; D. Thompson, 519; K. Platt, 571; D. Eder, 515; L. Miller, 525; B. Snyder, 556; D. Heeter, 500; J. Hansen, 569; F. Moorzejewski, 507; D. Clouse, 513; L. McGowen, 513; R. Bareis, 543.

Telephone Your Club News To 475-1371.

WILD GAME RECIPES

Home is the hunter! What now? Now you can fix meals that are mouth watering with: Venison, Moose, Elk, Rabbit, Squirrel, Quail, Dove or Woodcock.

To order your Wild Game Recipes: Mail \$2.00 cash, check or money order to:

B & J ENTERPRISES

1812 Anderson St., Charlotte, N. C. 28205

Need Coaches

For Biddy Basketball

Coaches are again needed for this year's biddy basketball program, sponsored by the Chelsea Recreation Council. The program will operate on Saturday mornings, Dec. 3 through March 4.

In addition to devoting Saturday mornings to the program, coaches must be willing to spend a few hours each week teaching basketball skills to children between the ages of 7 and 12.

"Without coaches, our program cannot exist," says Bill Wescott, biddy basketball co-ordinator. "It is the most important component of any recreational program. Without the coaching leadership provided by many people, our program could not meet its goals." Anyone interested in coaching biddy basketball this year should contact Wescott at 475-8518.

The first state-supported employment service was in Ohio in 1890, according to "Labor Firsts in America," a publication of the U.S. Department of Labor.

The Chelsea Standard, Thursday, December 1, 1977 7

Agriculture is the nation's biggest industry with assets totaling almost \$300 billion. The beef cattle industry is the largest segment of agriculture.

Twenty years ago there were 2 1/2 times as many farmers-cattlemen as there are today. Yet our food output today is twice what it was 20 years ago.

Tay-Sachs disease, appearing primarily in infants of Jews of Eastern European descent, is a birth defect which affects the brain and ultimately leads to death, says The National Foundation-March of Dimes. In its search for a cure, the NF sponsors research projects dealing with biological genetics and cell biology.

McCalla Feed Service

Phone 475-8153

12875 Old US-12 E. Chelsea

WAYNE DOG FOOD

WAYNE CAT FOOD

WATER SOFTENER SALT

BIRD FEEDS

SUNFLOWER SEEDS

HORSE FEEDS

RABBIT FEED

Bird Houses - Dog Houses

AMTRAK'S GOT A NEW MICHIGAN EXECUTIVE.



We're talking about the new Amfleet trains running between Jackson and Detroit. These new trains will turn ordinary train travel into a luxurious adventure. The "Michigan Executive" Amfleet looks as good from the inside as it does outside. We have all the most modern equipment with everything that makes traveling what it should be, comfortable and fun. There are wider seats with plenty of legroom, plush carpeting (even on the walls) and a climate control system that is sure to keep you snugly warm this winter. To help you catch up on reading all those exciting office memos, we've got individual seat lights and drop-down trays on the back of each seat.

Our new Amfleet trains aren't the only attractive offer we have for you. Our special 46-ride multi-ride ticket will save you up to 55% off the regular coach fare. Here's how it works: buy a ticket at the beginning of any month and it entitles you to 46 single rides in either direction for any city pair and intermediate points along our route.

At Amtrak's Detroit station, you'll find special buses waiting to shuttle you to Wayne State University, New Center and all major downtown business and shopping locations, including the exciting new Renaissance Center

complex. (Shuttle bus fare - 40¢ each way.) For more information on our new "Michigan Executive," simply call Amtrak (toll-free) at 1-(800)-621-0353.

	Regular Coach	Off-Peak Round-Trip 30 Day Coach Excursion*	46 Ride Coach Ticket
Chelsea to:			
Jackson	\$3.40	\$2.55	\$41.50
Ann Arbor	2.70	2.05	36.00
Ypsilanti	4.00	3.00	48.50
Detroit	9.20	7.00	91.00

*Not good for boarding after 11:00 AM on Fridays and Sundays. Not good all day during certain holiday periods.

Michigan Executive Schedule

	Jackson	Chelsea	Ann Arbor	Ypsilanti	Detroit
Eastbound	6:15 AM	6:37 AM	7:00 AM	7:10 AM	7:30 AM
Westbound	6:45 PM	6:20 PM	6:00 PM	5:45 PM	5:15 PM

Amtrak Station, Jackson St., Chelsea

St. Barnabas Episcopal Church
Women's bazaar, Dec. 3, 11:30 to
4:30, at St. Barnabas church on
Old US-12. Luncheon, Christmas
boutique, bird feeders and fillers,
home-baked goods. -adv25

Lyndon Township Planning Commission meets the second Thursday of the month at the Township Hall at 8 a.m. ed: 424

Lyndon Township Board regular meetings the third Tuesday of each month, 7 p.m., in Lyndon Town Hall.



***Snow Days for School
To Be Announced on
Area Radio Stations***

the schools on snow days will always be reached by 6:30 a.m. Parents wishing to learn the decision may do so by listening to radio stations WJR, WAAM, WP-AG, or WNRS.

Herbert J. Dailey
North Lake Area Resident
Dies Following Long Illness

of Stillwater, Minn.; one uncle, George Erlewine of Dunedin, Fla.; and one cousin, Marie King of Whitmore Lake. He was preceded in death by one brother, George E. Dailey, in 1962.

The National Foundation-March of Dimes acts as a clearinghouse for birth defect data gathered in several European nations, Canada

DR. ELMER L. HAMMOND

and was a member of the 69th Aerial Photographic Section at Hazelhurst Field, L.I., New York, until May, 1919.

JC Auxiliary Lunch With Santa Slated

From the midst of Christmas decorations and holiday carols, children will also have the opportunity to personally relate their Christmas wishes to Santa. Parents are invited to bring

Cancer Society chapter by a Chelsea resident.

direct from
on retail purchases of select

Model WWA 8500V

\$25 Bond

direct from GE when you buy this
GE DISPENSALL™
WASHER

- Large capacity • 2-in-1
Washer with extra Mini-Basket™

GO

GAMBLES

110 N. Main St. Ph. 475-7472

FOR CHRISTMAS

TOYS

Tremendous Selection!

**All the Famous
Name - Brand Toys**

**ALL AT GAMBLES
LOW PRICES!**

Shop Now & Save!

USE OUR LAY-AWAY PLAN

DANCER'S

the
perfect
gift

Which is why we call
Evans slippers the
perfect gift.


Evans
Made in U.S.A.

STORE HOURS:
Monday thru Saturday, 8 a.m. till 5:30 p.m.
Friday till 8:30 p.m.

STRIETER'S

CHRISTMAS STORE FOR MEN

GENERAL ELECTRIC HAS A

HOLIDAY GIFT

FOR YOU

A U.S. SAVINGS BOND

direct from General Electric

on retail purchases of selected models from Nov. 5 through Dec. 31, '77

\$25 Bond
direct from GE when you buy this
GE DISPENSALL™
WASHER

- Large capacity • 2-in-1[†]
- Washer with extra Mini-Basket
Tub and Mini-Cycle™ Cycle
- 4 speed combinations
- 5 Wash/Rinse Temperature
Combinations • Programmed
Soak

\$25 Bonus
direct from GE when you buy the
GE NO-GUESSWORK
2-IN-1 WASHER

- Large Capacity Tub plus Mini-Basket™ Tub + 5 programmed Fabric Selections
- Cold Wash/Rinse Selection
- 3 Speed combinations
- 4 Cycles

\$25 Bonus
direct from GE when you buy the
GE 2-In-1 WASHER
with exclusive MINI-
BASKET™ TUB

- 4 cycles including Permanent Press, Polyester-Knit • 5 Wash Rinse Temp. Combinations incl./Cold Water Selection
- Bleach and Fabric Softener Dispensers

\$25 Bonus
direct from GE when you buy
GE ELECTRONIC
CONTROL DRYER

- Large Capacity • Electric Sensor for "no-guesswork" drying • 3 Cycles • 4 Dryer Selections • Perm. Press

Also available in Gas
Model DDG 9280V

 Model JHP97GV

\$25 Bond
direct from GE when you buy this
GE MICROWAVE
COOKING CENTER

- Microwave Upper Oven with Micro-Thermometer™ Control
- Conventional Lower Oven is

 Model JB500GW

\$25 Bond
direct from GE when you buy this
GE RANGE with P-7™
SELF-CLEANING OVEN/
DIGITAL CLOCK

- 3-in-1 Power Saver Calrod®


Unit lets you select heat area.

\$50 Bonus
direct from GE when you buy to
GE 20.7 Cu. Ft. NO-FROST
REFRIGERATOR-FREEZER
• Delivers crushed ice or cubes
to your glass • Huge 6.82
Cu. Ft. Freezer • Automatic


\$25 Bonus
direct from GE when you buy a
GE CONVERTIBLE/PORCELAIN
POTSCRUBBER® DISHWASHER
• 5-cycle wash selection
• Sound insulated • 3-level
action • Power Saving D

 Model GSD 1070

\$25 Bond
direct from GE when you buy this
GE BUILT-IN 6-CYCLE
POTSCRUBBER II®

 Model GSD 970

***\$25 Bonus**
direct from GE when you buy this
GE BUILT-IN 5-CYCLE
POTSCRUBBER II*

 Model GSD 870

***25 Bond**
direct from GE when you buy the
GE BUILT-IN 4-Cycle
POTSCRUBBER II®

\$25 Bonus
direct from GE when you buy
a **GE TRASH COMPACTOR**
• Powerful Compacting Motor

HE
113 N. Main

YDLA
St., Chelsea

AUFF

HEYDLAUFF'S

113 N. Main St., Chelsea Ph. 475-1221



Real Estate

By PAUL FRISINGER

REALTOR

BUYING A LOT

Buying land involves risks. Contrary to popular belief, land is not a fail-safe investment. The Florida land boom of the mid-20's was not the only time people lost money speculating in land. It happens every day. Here are some guidelines which may help in reducing the risk factor.

Generally speaking, the more you pay for a lot, the surer you are of getting your money's worth. If you pay x-amount of dollars for a developed lot with utility lines already in, you may be better off than buying the same lot for one-half the amount before the roads and utilities are built out to it. Development costs vary, but almost anywhere they are rising every year.

If you are not a land expert, the most preferred method of buying a lot is to have a REALTOR do your negotiating. His most valuable asset is his knowledge of property values. You are far better off with him on your side.

If there is anything we can do to help you in the field of real estate, please phone or drop in at FRISINGER REALTY CO., 935 S. Main St., Chelsea, Mich. Phone: 475-8881; evenings 475-2621. We're here to help!

475-2030
475-8765

115 PARK ST.
CHELSEA, MICH.

MAYER AGENCY

(of Springer-Kleinschmidt Agency Inc.)

Your Local Independent Insurance Agency providing dependable protection and prompt claim payment through 10 of the nation's leading insurance companies.

HOME - AUTO - BUSINESS INSURANCE



Sheridan W. Springer
Ruth DeVine

Charles A. Kleinschmidt
Micky Quackenbush

JV Cagers Lose Squeaker To Stockbridge

In junior varsity basketball action Tuesday night, Stockbridge squeaked to a 53-51 victory over Chelsea after finishing two points ahead of the Bulldogs in the first two quarters as opposed to Chelsea's one-point lead over Stockbridge in each quarter of the final half.

Chelsea's downfall was its shooting, according to Coach Jon Schaffner, as the team made only 21 of 73 field goal attempts for a shooting percentage of only 29.

However, the coach noted that both the junior Bulldogs' defense and rebounding were much improved over last Saturday's debut against Jackson Northwest.

Quarter scores in the game were Chelsea 9, and Stockbridge 11, at the end of the first; Chelsea 13, Stockbridge 15, at the end of the second; Chelsea 12, and Stockbridge 11, at the end of the third; and Chelsea 17, Stockbridge 16, at the end of the fourth.

Leading Bulldog scorers were John Dunn with 19 points, Jeff

(Continued on page 11)

Week-End Snowstorm Results in Accidents

Winter hit the Chelsea area with a vengeance over the Thanksgiving Day week-end, piling up three-to-five inches of snow on the ground, leaving roads icy, and causing traffic snarls and at least four minor accidents locally.

Following a lighter snowfall Friday, the area's first major snowstorm blew into town early Sunday afternoon and accelerated through the early evening hours. Poor road conditions hampered return trips home by Thanksgiving holiday travelers.

Crews from the Washtenaw County Road Commission worked all night Sunday clearing snow from all main county roads and were still out Monday, removing snow from gravel roads which form arteries with the main ones.

The first accident to occur locally as a result of slippery and snow-covered roads came Friday at about 10 p.m., when a 1973 full-size Chevy, driven by Jean Butcher, 16, of Mason, slid off Cavanaugh Lake Rd. and onto the railroad tracks near Cleveland St.

Police reported the accident was due to the driver's failure to have the vehicle under control. No injuries resulted from the mishap.

The following morning, at about 9:20, a car driven by Floyd Rinehart, 17, of 551 Glazier Rd., was speeding too fast for conditions while attempting to negotiate a left-hand turn from northbound Main St. onto westbound W. Middle St. Because of the icy road

conditions, Rinehart skidded into a car properly parked in the first parking space of Main St., on the north side of W. Middle St. Again, no injuries were reported. Reports of "fender-benders" increased with Sunday's snowfall, according to local police.

Officers were called out to northbound S. Main St. near Old US-12 at about 12:20 p.m. to investigate an accident that occurred when Richard L. Schanz, 49, of 15 Hickory Dr., ran into a no-parking sign while attempting to avoid another vehicle idling in his path.

Police said Schanz was traveling southbound on Main St. and did not see the vehicle waiting to turn left into the Chelsea Medical Center drive because of the turning vehicle's poor tail lights. Schanz applied his brakes, but started to slide on the snow covered street, and decided to hit the sign instead of the car ahead of him. There were no injuries in the incident.

Later Sunday afternoon, at about 3:40 p.m., Agnes M. Cook, 79, of 1994 Old US-12 was backing up from her parking space along the Chelsea Medical Center driveway when her vehicle was struck in the left rear by a Horne-Vinson ambulance, driven by Ralph B. Card, 28, of Ann Arbor.

Card was unable to stop in time to avoid a collision because of the snow covered and icy road. He was not cited by police, nor were there injuries reported in that accident.

Home Meal Service Needs Volunteer Drivers

Chelsea Home Meal Service, a program operated locally to provide elderly and handicapped individuals in the area with one hot meal per day, is again in need of drivers, particularly for Tuesday deliveries.

According to program spokesperson, Mary Ann Merkel, Chelsea is one of the few communities offering a hot meal service for the elderly and handicapped without government assistance. Instead, Chelsea's service relies on volunteer help.

Drivers spend approximately one hour per week delivering the hot meals which they pick up at 11:15 a.m. daily at the Chelsea United Methodist Retirement Home. Prior to assuming responsibility

for a route, new volunteers participate in a short orientation period which entails making deliveries with a seasoned driver.

Chelsea Home Meal Service constantly needs both regular and substitute drivers because of the frequency with which vacancies occur. Many regular drivers leave the area for Florida during the winter, or accept full-time jobs with pay elsewhere.

"Senior citizens in good health are especially encouraged to volunteer as drivers for the program," Mrs. Merkel said.

Persons interested in helping out with the Home Meal Service program should call Barbara Branch at 475-7644.

JV Cagers Edged Out By Jackson NW

It was the second half of a hotly contested battle last week that determined Chelsea's junior varsity cagers and gave them a 50-60 opening games loss at the hands of Jackson Northwest.

Chelsea and Jackson played to a 14-14 tie in the first quarter, and followed with 10 more points each in the second period to keep the score evenly balanced at 24-24.

However, in the second half, Jackson returned to outscore the junior Bulldogs by 10 points and came out on top of the 60-50 decision. The Bulldogs managed 13 points in both the third and fourth periods, while Jackson netted 18 points in each period.

"Jackson Northwest out-rebounded us 26-30, even though they were a smaller team size-wise," Chelsea Coach Jon Schaffner said in analyzing the Bulldog loss. "We have to improve our rebounding and defense to win consistently this season."

All was not bad for the junior Bulldogs though, as they did come up with a good 63 percent free throw percentage, making 12 of 19 free throw attempts.

Mike Killelea led Chelsea in rebounds, grabbing 14. Don Alber was the next highest rebounder with 3. Scoring for Chelsea were John Dunn with 13 points, Jeff Dils also with 13, Mike Killelea with 11, Dan McGill with 6, Dan Alber with 4, Karl Albrecht with 2, and Mike Wood with 1.

A baby risks being born with Rh disease if his blood type is positive and his mother's is negative, reports The National Foundation-March of Dimes. A vaccine is available to prevent the possibility of Rh disease.

HOST Carpet Cleaning

December is a Holiday month when friends drop in frequently. Be sure your carpeting is "guest" clean. We recommend Host, the new method of cleaning carpets without water. The carpet is dry and ready to walk on immediately. Use our Host Electric Up-Brush. It's easy. Clean 40 sq. yds. only \$9.95. Phone for information.

MERKEL BROTHERS

Second Section

The Chelsea Standard

Pages 9-14

CHELSEA, MICHIGAN, THURSDAY, DECEMBER 1, 1977



BULLDOG DAVE SCHROTTENBOER (50) moves in for a lay-up shot, slicing neatly between two Stockbridge defenders in the process. Although Chelsea cut-scored Stockbridge in both the second and fourth quarters of Tuesday's encounter, the Bulldogs were unable to close their 19-point first quarter gap behind Stockbridge, and lost the contest, 57-84.

Cub Scout Tree Sale Starts Dec. 5

Once again this year, area Cub Scouts and their fathers will brave the winter weather to hold their annual Christmas tree sale.

Cubs and fathers from Packs 435, 445, and 455 will be picking up approximately 450 fresh-cut trees from the Quality Christmas Tree Farm the week-end of Dec. 3-4.

Location of the tree sale will again be Meabon's parking lot on S. Main St. Sales will begin Dec. 5, and continue up through Dec. 24, unless all the trees are sold earlier. Hours will be Monday through Friday, 5 p.m.-9 p.m.; Saturdays, 9 a.m.-5 p.m.; and Sundays, 11 a.m.-3 p.m.

This annual event is the Cub Scouts' major fund raising project.

Every two minutes a newborn is denied a healthy birth, says The National Foundation-March of Dimes. The volunteer health agency's goal is the prevention of birth defects.

Two CHS Students In Math Competition

Two Chelsea High school students finished in the top 4.6 percent on Part I of the 21st annual Michigan Mathematics Prize Competition, and will be among 1,081 Michigan students to compete in the final examination Wednesday, Dec. 7.

Chelsea math students who qualified for the second test were Mike Waldyke, a CHS junior and son of Dr. and Mrs. Jerry Waldyke, of 553 Chandler St.; and Dave Waldyke, a CHS sophomore and also a son of Dr. and Mrs. Jerry Waldyke.

The competition was sponsored by the Michigan Section of the Mathematical Association of America, and is designed to foster a wider interest in mathematics, to focus attention on the necessity for mathematical training in most professions and trades, and to identify and provide scholarships for capable Michigan mathematics students.

The 100 winners of the competition will be honored at an Awards Program to be held at

Eastern Michigan University on Saturday, Feb. 25, with 40 of the winners receiving a total of more than \$7,000 in college scholarships.

The scholarship fund includes contributions from the Burroughs Corp., the Kuhlman Corp., and the Michigan Council of Teachers of Mathematics.

Ken Larson, Chelsea High math department chairman, served as the high school supervisor for Chelsea students competing in the examination.

Untreated venereal disease in a pregnant woman can kill or cause severe birth defects in her unborn baby, reports The National Foundation-March of Dimes. Regular medical attention and early prenatal care provide for detection of VD and help prevent this threat to the unborn.

Please Notify Us of Any Change in Address

NEW SATURDAY SANDWICH PLATE SPECIAL

OUR FAMOUS GERMAN BEEF BAR-B-Q FRIES - COLE SLAW \$2.50

BLOODY MARY SPECIAL ALSO ON SATURDAY

OPEN 11 a.m. to 11 p.m. Monday thru Thursday
11 a.m. to Midnight Friday and Saturday
12 Noon to 9 p.m. Sunday

SCHUMM'S
1620 M-52 PHONE 475-2020

RICK'S MARKET

20490 M-52

"The Store with the Spartan on the Door"

Phone 475-2898

JENO'S SNACK TRAY 7 1/4-Oz. 99¢

TASTE O' SEA SEAFOOD PLATTER 9-Oz. Pkg. 89¢

MRS. PAUL'S CANDIED SWEET POTATOES 12-Oz. 45¢

PILLSBURY CHERRY NUT QUICK BREAD MIX 16-Oz. 83¢

BANQUET BUFFET

Turkey, Beef Stew, Chop Suey, Chicken and Noodles, Noodles and Beef

2-Lb. \$1.19

ECKRICH SMOK-Y-LINKS 10-Oz. Pkg. 85¢

SPARTAN AMERICAN CHEESE SLICES 24 Slices 1-Lb. Pkg. \$1.25

SPARTAN MARGARINE In Quarters 1-Lb. Pkg. 35¢

WIN SCHULER'S BAR SCHEEZE 8-Oz. Crtn. 75¢

CHEF PIERRE'S APPLE DUMPLINGS Pkg. of 5 \$1.69

CHEF PIERRE 2 1/2-LB.

MINCEMEAT PIES \$1.59

RICK'S HOT BREAD DAILY

Weekdays by 3:30 p.m. Sat. & Sun., by 10:30 a.m.

(QUANTITY RIGHTS RESERVED)

LITTLE WANT ADS! BIG PLUSES FOR BIG RESULTS!

JUST PHONE
475-1371

WANT ADS

Complete Body Repair Service

Bumping — Painting
Windshield and Side Glass Replacement

Free Pick-up and Delivery
Open Monday Until 8

CONTACT DON KNOLL
FOR FREE ESTIMATE

Village Motor Sales, Inc.

CHRYSLER — DODGE
LYMOUTH — DODGE TRUCKS

Phone 475-8661

1185 Manchester Rd., Chelsea

Hours: 8 a.m. to 5:30 p.m.

9 a.m. to 1 p.m. Saturday

Tues. thru Fri. Until 8 Monday

ATTRESS WANTED — Must be

18 years of age. Ph. 475-7605 or

2-2939, or apply in person after 4

p.m. Thompson's Pizzeria, Chelsea

FRISINGER

9,500 — 71-acre farm, Clinton

schools, house not liveable, but

clides a 12'x50' mobile home.

3,500 — 2 1/2 acres, hilltop setting,

3-bedroom ranch. Chelsea

schools.

4,900 — 2-bedroom home, Half

Moon Lake, glassed-in porch,

ice beach, dock included, Chelsea

schools.

39,000 — 5-bedroom home, 3 baths,

country kitchen, 40-foot family

room with fireplace, 10 acres over-

looking Four Mile Lake.

39,900 — 3 bedrooms, 3 baths, fam-

ily room, super custom designed,

quality built, 1.5 acres, central air,

Chelsea schools.

FRISINGER

REALTORS

Chelsea 475-8681

yes: Herman Koenn 475-2613

Paul Frisinger 475-2621

Bob Koch 426-4754

George Frisinger 475-2903

x231f

QUASAR

TELEVISION

Sales & Service

service on most major brands.

Also, antenna installation and

antenna supplies.

PORTER'S TV

212 Buchanan St., Chelsea

Ph. 475-8380

New '77s and Demos

77 OLDS 88 Custom Cruiser Wag-

on 3-seat, air cond., Demo.

..... \$6100

USED CARS

76 BUICK LeSabre Custom 4-dr.

hardtop, air cond. (2) \$3995

76 BUICK Skylark S-R 2-dr., air

cond. \$3795

75 MERC Cougar XR7 2-door

hardtop, air cond. \$3595

75 OLDS 98 LS 2-dr., hardtop, air

cond. \$3795

74 OLDS Delta 88 Royale 4-dr.

hardtop, air cond. \$2495

72 BUICK LeSabre Custom 4-dr.

air cond. \$895

NEW HOURS

on, Tues., Wed., Fri., 8:00-5:30

Thurs., 8:00-9:00

Sat., 9:00-1:00

SPRAGUE

Buick-Olds-Opel, Inc.

1500 S. Main St., Chelsea

Ph. 475-8664

25tf

ART-TIME TELLER — Position

available at our Dexter office to

work full days, Mondays, Tues-

days and Fridays, and until 12:30

p.m. Saturdays. Previous teller or

shier experience desired. Apply

person at our personnel depart-

ment at the main office, Ann Arbor

Bank & Trust Co., 101 S. Main St.,

in Arbor. x25

WANT ADS

WANTED — Walnut trees and

white oak. Ph. Don Patrick, 1-

616-527-4499, or write Rt. 4, Ionia,

MI. 48846. x34

FOR SALE — 1976 Yamaha Excit-

er 440 cc, snowmobile with two-

place trailer, with extra belt and

tools. \$1,400 or best offer. 1995 1228

Volvo 4-door, good condition, \$450,

with 2 snow tires. Ph. 475-2911.

x20tf

BABYSITTING in my home less

than 1 mile from city limits.

Babies welcome. 2-year-old play-

mate. Call 475-1483. x24tf

FOR SALE — 10-acre parcels near

Chrysler Proving Grounds. Ph.

475-8234. x24tf

CASSETTE TAPE DUPLICATION,

any length or quantity. Call for

more information, 475-8323. x27

Household Auction

Having sold our home we will sell

the following at Public Auction

at 317 Vernon Street, Manchester,

Michigan. Take 1-94 to M-52 then

south on 52 to Main Street, cross

Main Street two blocks then left.

Near Middle School.

Sunday, Dec. 4th

Commencing at 1 p.m.

Antique oak table with turned legs,

oak buffet with bevel glass mir-

ror, maple kitchen table and four

chairs, desk with Remington type-

writer, mirror, antique oak bed-

room set (bed, chest of drawers

with mirror), golden oak high back

bed (nice), antique walnut dresser

with mirror, small three-drawer

walnut dresser, 2 carpenter chests,

hard rock maple coffee table, gold-

en oak commode, golden oak fern

stand, rocker recliner, davenport,

occasional chairs, antique oak fold-

ing cane bottom high chair, rec-

ord-play radio combination, black

and white portable TV, ash chest

of drawers, quilting frames, old

books, buttons, smoking stand, iron

baby bed, picture frames, pie safe,

oak five-leg table, five oak pressed

back chairs, silver plate, Sterling

spoons, metal cabinet, 20-gallon

crock, dated fruit jars, depression

glass dishes, deep candy dish, Ann

Arbor Brewery bottle, Benington

milk pitcher, hand painted dishes,

black amethyst vases, pots and

pans, lots of marbles, set of Royal

demi porcelain Johnson Brothers

England bone dishes, cut and

pressed glass bowl, beautiful RS

Urusia berry set, glass door book

case.

Massey-Ferguson 10-h.p. lawn and

garden tractor, real nice, runs

good; 8" Craftsman table saw with

planer attachment, Craftsman

hedge trimmer, like new; setup

ladder, Coleman lantern, C clamp,

garden tools, 1 1/2-ton chain fall, 2

wheel hoes, set of taps and dies,

flower pots, pipe fittings, lots of

bolts, nails, Old hand tools, motors,

wet sandstone grinder with motor,

stock water tank.

Many more items not listed!

Mr. & Mrs. Ed Wurster

Braun & Helmer

Auction Services

LLOYD R. BRAUN

Ann Arbor, 665-9646

JERRY L. HELMER

Plymouth, 453-4109

Inspection day of sale.

Terms: Cash or Check.

Nothing removed until settled for.

Not responsible for accidents.

Lunch on grounds. x25

GRASS LAKE

LAND — 10-acre parcels across

from 4132 Norvell Rd.

LAND — 3-acre parcels at the NE

corner of Maute and Bohne Rds.

LAND — 25 acres wooded with

hills, water, nice frontage, will

split.

2- or 3-BEDROOM, story and a half

older home, oil heat, dining room,

nice lot, reasonable.

3-BEDROOM rancher, carpeted,

plastered, hot water heat, full

basement, large lot, good location.

Fast possession.

Southside Realty

1-517-522-8469

26

AMANA REFRIGERATOR, 32"x

65", \$110; Admiral stove, electric,

26"x30", \$50; General Electric

dryer, automatic cycle, push but-

ton, 27"x25", \$100; 3 executive

desks, 1 wood, 30"x52", \$85 each;

1 bed frame, double mahogany,

\$35; lockers, storage, 18"x36"x70",

high, \$45 each; Speed Queen wring-

er type washer, \$15; all kinds and

types, prices; chairs, dresser. Call

426-3355 persistently, anytime. 7997

Grand, Dexter. x25

WANT ADS

PIANO TUNING and repair. Qual-

ified technician. Call Ron Har-

ris. 475-7134. x10f

FOR SALE — Beautiful antique

oak sewing machine. In good

working condition. \$75. Ph. 663-

8225. x14tf

WANTED — Plow ground and stand-

ing hay. Ph. 475-2771. x37f

PATCHING and PLASTERING

Call 475-7489. x38f

RON MONTANGE

CONSTRUCTION

—Full carpentry services

(rough & finish)

—Additions & remodeling

—Garages

—Repairs

—Roofing and Siding

—Cabinets & formica work

—Farm Buildings

—Excavating & trenching

QUALITY WORKMANSHIP

FREE ESTIMATES

Ph. 475-1080

19tf

A CHRISTMAS GIFTIQUE—Hand-

made gifts and decorations to

brighten your home and complete

your list. Come, browse, and en-

joy free cookies and coffee. Dec.

2, 9-4, 9-9, Dec. 3, 9-4, 13850 N.

Territorial Rd. (across from In-

verness Golf Course). x25

Pierson &

Riemenschneider

REALTORS

111 Park St. 475-9101

YOUR STATE-WIDE Connection

for Business Opportunities, In-

vestments, Farms, and Income-

Producing Properties.

We Have Qualified Buyers For:

—Local Retail Space

—Chelsea Income Properties

—Main St. Commercial

—Developable Industrial Prop-

erty

475-9101

Stop in or call for your compli-

mentary copy of the Michigan

Business and Investment Guide.

Members of

Partridge and Associates, Inc. x25f

TRADE UP to the larger home you

need. Extras include 2 acres just

outside village limits and walking

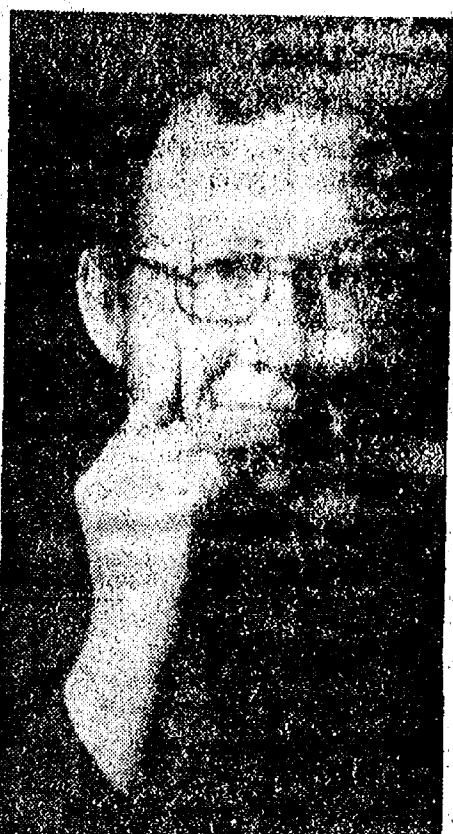
distance to school. Rental home on</

NOW ON TUESDAY NIGHTS CHICKEN BUFFET



with our Famous Deep-Fried Chicken
and SPECIAL BARBECUED CHICKEN
also mashed potatoes and gravy, dressing, and salad bar.
Serving from 4:30-9:00
at the CAPTAINS TABLE
8093 MAIN ST., DEXTER PH. 426-3811

You're Invited To Hear...



Gary Thomson
Outstanding
Canadian
Singer
and
Evangelist

A Full Gospel
ministry

DECEMBER 14-18

7:00 p.m.

**FIRST ASSEMBLY
OF GOD**

14900 Old US-12 E. Chelsea
REV. RICHARD J. COURY, PASTOR

+ Services in Our Churches +

**FIRST UNITED
METHODIST CHURCH**
The Rev. Marvin H. McCallum,
Pastor
Saturday, Dec. 3—
10:00 a.m.—Praise Choir rehearsal.
Sunday, Dec. 4—
10:00 a.m.—Worship service. Nursery for infants up to 2 years old, and church school for 2- and 3-year-olds.
10:20 a.m.—Church school for 4-years-old through 6th graders.
11:00 a.m.—Junior high church school. Coffee and punch hour.
11:10 a.m.—Senior high church school.

CONGREGATIONAL CHURCH
(United Church of Christ)
The Rev. Carl Schwarm, Pastor
Sunday, Dec. 4—
9:00 a.m.—Confirmation.
10:30 a.m.—Worship.

**ST. BARNABAS
EPISCOPAL CHURCH**
20550 Old US-12
The Rev. Fr. Jerrold F. Beaumont
B.S.P.

Every Sunday—
10:00 a.m.—Holy Communion first, third, and fifth Sundays, and 7:30 p.m. every Wednesday.
10:00 a.m.—Morning prayer. Second and fourth Sundays. Church school and nursery every Sunday.
Every Wednesday—
8:15 p.m.—Bible study and discussion groups.
First Wednesday of every month—Bishop's Committee.
Third Thursday of every month—Episcopal church women.

FIRST ASSEMBLY OF GOD
The Rev. Richard Coury, Pastor
Every Sunday—
9:45 a.m.—Sunday school.
11:00 a.m.—Worship service.
6:00 p.m.—Evening worship.
Every Wednesday—
7:00 p.m.—Christ's Ambassadors. Missionettes. Bible meditation and prayer.

**WATERLOO VILLAGE
UNITED METHODIST CHURCH**
8118 Washington St.
The Rev. Glenn Kjellberg, Pastor
Every Sunday—
10:00 a.m.—Sunday school.
11:15 a.m.—Worship service.

**ST. THOMAS
EVANGELICAL LUTHERAN**
Ellsworth and Haab Rds.
The Rev. Jerome Dykstra, Pastor
Every Sunday—
10:00 a.m.—Worship service. Coffee Fellowship.

**ST. PAUL
UNITED CHURCH OF CHRIST**
The Rev. R. J. Ratzi, Pastor
Thursday, Dec. 1—
9:15 a.m.—The Gleaners Bible Study Group.
7:30 p.m.—Stewardship.
Saturday, Dec. 3—
9:00 a.m.—Confirmation.
Sunday, Dec. 4—
9:00 a.m.—Church school.
10:30 a.m.—Worship and church school.
3:00 p.m.—Advent Workshop.
5:00 p.m.—Chill Supper.
Tuesday, Dec. 6—
3:30 p.m.—Joyful Noise.
7:30 p.m.—Board of Christian Education.
Wednesday, Dec. 7—
3:30 p.m.—Joyful Noise and Junior Choir.
7:00 p.m.—Music Committee.
7:30 p.m.—Chancel Choir.
Thursday, Dec. 8—
7:30 p.m.—Memorial and Gifts. Spiritual Life.

**OUR SAVIOR LUTHERAN
CHURCH**
1515 S. Main, Chelsea
The Rev. William H. Keller, Pastor
Sunday, Dec. 4—
9:00 a.m.—Sunday school and Bible classes.
10:30 p.m.—Worship service.
Wednesday, Dec. 7—
3:30 to 5:30 p.m.—8th grade Confirmation.
4:00 to 5:30 p.m.—6th and 7th grades Confirmation.

NORTH SHARON BIBLE CHURCH
Sylvan and Washburne Rds.
The Rev. Ronald C. Purkey,
Pastor

Every Sunday—
10:00 a.m.—Sunday school. (Nursery available). Junior church classes.
11:00 a.m.—Worship service.
6:00 p.m.—Senior High Youth meeting. Youth Choir.
7:00 p.m.—Evening worship service. (Nursery available.) All services interpreted for the deaf.
Every Wednesday—
7:00 p.m.—Bible study and prayer meeting. (Nursery available.) Bus transportation available: 428-7222.

IMMANUEL BIBLE CHURCH
145 E. Summit St.
The Rev. LeRoy Johnson, Pastor
Every Sunday—
9:45 a.m.—Sunday school, nursery provided.
11:00 a.m.—Morning worship, nursery provided.
6:00 p.m.—Evening worship.
Every Wednesday—
7:00 p.m.—Family hour, prayer meeting and Bible study.

**BETH EL EVANGELICAL AND
REFORMED CHURCH**
(United Church of Christ)
Freedom Township
The Rev. Roman A. Reineck,
Pastor

Every Sunday—
10:00 a.m.—Worship service.

**CHELSEA FREE METHODIST
FELLOWSHIP**
Meetings at St. Barnabas
Episcopal Church
20500 Old US-12
The Rev. William L. Cryderman,
Pastor

Call 475-8853 for information.
Every Sunday—
4:00 p.m.—Worship service.
5:00 p.m.—Adult Bible Study and Sunday school for all ages.
Every Wednesday—
3:30 p.m.—Junior Choir at the Pratt residence, 625 N. Main St.
Every Thursday—
7:00 p.m.—Prayer meeting at the church except for the third Thursday of every month. Family Night in homes, call for location.

FIRST UNITED METHODIST
Parks and Territorial Rds.
The Rev. Glenn Kjellberg, Pastor
Every Sunday—
9:15 a.m.—Morning worship.
10:00 a.m.—Sunday school.

CHURCH OF CHRIST
13861 Old US-12, East
Evangelist John M. Hamilton
Every Sunday—
10:00 a.m.—Church school.
11:00 a.m.—Worship service. Nursery will be available.
6:00 p.m.—Worship service.
Every Wednesday—
7:30 p.m.—Bible study.

**GET PROFESSIONAL
carpet cleaning results!**
(At do-it-yourself prices)

RENT OUR RINSEVAC—the new portable, easy-to-use hot water extraction carpet cleaning machine that gently...

- rinses carpet fibers with hot water and cleaning solution
- loosens and lifts dirt, grime and residues to the carpet surface where they are immediately vacuumed up
- leaves your carpets CLEAN and FRESH

Check Our Low Price

GAMBLES
110 N. Main Ph. 475-7472

ZION LUTHERAN CHURCH
Corner of Fletcher, Waters Rds.
The Rev. John R. Morris, Pastor
Sunday, Dec. 4—
9:00 a.m.—Sunday school.
10:15 a.m.—Worship.
Monday, Dec. 5—
8:00 p.m.—Senior Choir.
Tuesday, Dec. 6—
4:00 p.m.—Junior Choir.

ST. MARY CATHOLIC CHURCH
The Rev. Fr. David Philip Dupuis,
Pastor
Mass Schedule:
Every Saturday—
4:00-5:00 p.m. Confession.
7:00 p.m.—Mass.
Immediately after 7 p.m. Mass, Confession.
Every Sunday—
8:00 a.m., 10:00 a.m., 12:00 noon—Mass.

**FAITH EVANGELICAL
LUTHERAN CHURCH**
8575 North Territorial Rd., Dexter
The Rev. John P. Huebner, Pastor
Every Thursday—
4:15 p.m.—6th grade Confirmation class.
5:45 p.m.—8th grade Confirmation class.
Every Sunday—
9:00 a.m.—Sunday school for ages 4-11. Teen classes for 7th graders-12th graders.
10:00 a.m.—Worship service.
Every Tuesday—
4:30 p.m.—7th grade Confirmation class.
7:30 p.m.—Inquirers.

**FIRST UNITED
PRESBYTERIAN CHURCH**
Unadilla
The Rev. T. H. Llang, Pastor
Every Sunday—
9:45 a.m.—Sunday school.
11:00 a.m.—Worship service.

**ST. JOHN'S
UNITED CHURCH OF CHRIST**
Rogers Corners
Every Sunday—
10:30 a.m.—Worship service.

**NORTH LAKE
UNITED METHODIST CHURCH**
The Rev. John Elliott, Pastor
Every Sunday—
10:00 a.m.—Church school.
10:00 a.m.—Worship service.

METHODIST HOME CHAPEL
Chaplain Ira Wood, Pastor
Every Sunday—
8:45 a.m.—Worship service.

BAHA'I FIRESIDE
Every Thursday—
8:00 p.m.—At the home of Toby Peterson, 705 S. Main St. Anyone wishing to learn about the Baha'i faith is welcome.

CHELSEA BAPTIST CHURCH
377 Wilkinson St.
The Rev. James Stacey, Pastor
Every Sunday—
9:45 a.m.—Sunday school for the whole family.
11:00 a.m.—Morning worship service and children's church.
6:00 p.m.—Evening service, informal singing, sharing, study and discussion. (Nursery care provided for all services.)
Home Bible Studies each week in the homes of the elders.
For information, call 475-8323.

**CHURCH OF JESUS CHRIST
OF LATTER-DAY SAINTS**
Meetings at
Church of Jesus Christ
of Latter-day Saints
2141 Brockman, Ann Arbor
Every Sunday—
9:30 a.m.—Sunday school.

**ST. JOHN'S EVANGELICAL
AND REFORMED CHURCH**
(United Church of Christ)
Francisco
The Rev. Virgil King, Pastor.
Every Sunday—
10:30 a.m.—Church services.

**FIRST CHURCH OF CHRIST
SCIENTIST**
1883 Washtenaw Ave., Ann Arbor
Every Sunday—
10:30 a.m.—Sunday school, morning service.

**SALEM GROVE
UNITED METHODIST CHURCH**
3320 Notten Rd.
The Rev. Gerald R. Parker
Pastor

Every Sunday—
9:30 a.m.—Sunday school.
10:30 a.m.—Worship service.

**ST. JACOB EVANGELICAL
LUTHERAN CHURCH**
12501 Riethmiller Rd., Grass Lake
The Rev. Andrew Bloom, Pastor
Every Sunday—
9:00 a.m.—Worship service.
10:15 a.m.—Divine services.

GREGORY BAPTIST CHURCH
The Rev. Paul White, Pastor
Every Sunday—
9:45 a.m.—Sunday school.
11:00 a.m.—Morning worship.
8:00 p.m.—Young people.
7:00 p.m.—Evening worship.
7:30 p.m.—Thursday mid-week worship service.

O Son of Being!

If poverty overtake thee, be not sad; for in time the Lord of wealth shall visit thee. Fear not abasement, for glory shall one day rest on thee.

From the Writings of the Baha'i Faith
BAHA'IS OF CHELSEA
475-2769 or 475-2718

Faster gains from better FEEDS

Calves get growing and getting faster, on our balanced, fortified Galf Feed... enriched with needed vitamins, minerals.

Complete feeding rations for all your livestock, poultry.

FARMERS' SUPPLY CO.
PHONE 475-1777

GRAND OPENING DEC. 3 Rivendell Natural Foods

We'd like to welcome you to our new natural foods store. We have granola, vitamins, cereals, dried beans, legumes, pasta, oils, flour, snacks and more.

**At Our GRAND OPENING DEC. 3
You'll Receive a 10% DISCOUNT on
ALL PURCHASES OVER \$10.**

3212 ALPINE, DEXTER PH. 426-2549
(Across from Farmers' Market)

**NEW HOURS BEGINNING DEC. 3
Tues. - Sat., 10 a.m. to 6 p.m.**

**Tell Them You Read It
In The Standard!**

Mobil Self Repair

Special Offer

**Free
One hour
bay rental**

With presentation of this ad.



**Special offer
includes hoist and
basic hand tools.**

Limit one hour per customer per car.
Offer good through December 17, 1977

**Mobil
Self Serve**

1629 Chelsea & I-94
Chelsea, Mich.

Mobil

I-94

Open 24 Hours
7 days per week

**New
Snack
Shop**

SAVE ENERGY!

Let Morse Brothers Construction Co. reinsulate your home with FOAM INSULATION and the fuel savings will pay for it. You are paying for insulation whether you have it or not, by higher heating and cooling bills.

WHY INSULATE WITH FOAM INSTALLED BY MORSE BROTHERS?

1. R 19 factor for 3 1/2" insulation.
2. Non-combustible, non-toxic when exposed to flame.
3. Controls sound.
4. Complete coverage. Fills all voids, stops air leaks.
5. Does not settle or deteriorate — 10-yr. warranty.
6. It is Hydrophic — Actively repels moisture.
7. Hostile environment to rodents and insects.
8. Approved by FHA.
9. Approved by the Dept. of Agriculture to be used near animals.
10. Increases the value of your home.
11. Can be installed into ANY type of home — brick, aluminum, wood, etc.
12. It is germ-free.
13. We are a fully insured and licensed contractor who can help solve any winterization problems from new roof to windows.
14. Financing available.

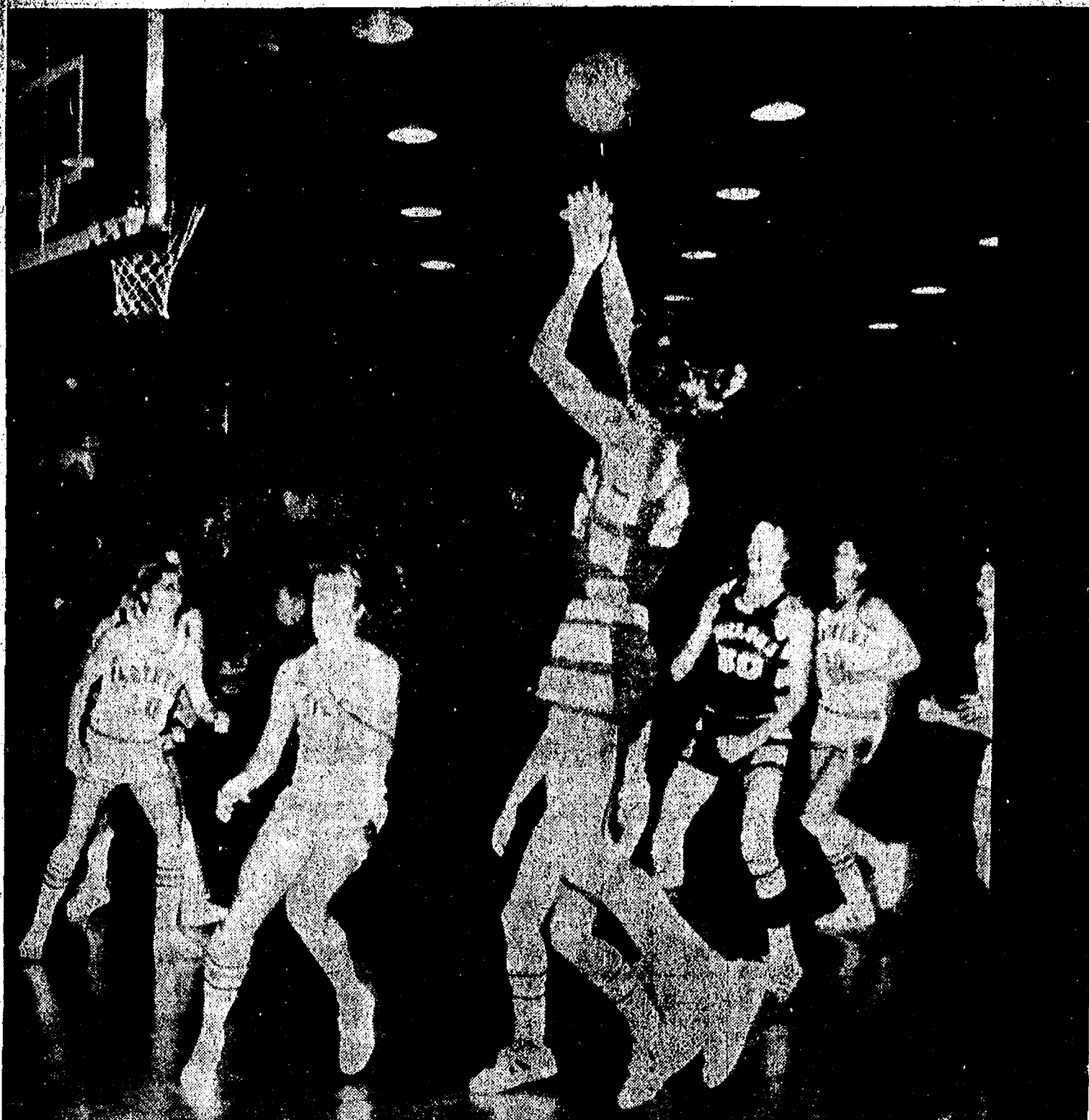
If you want to know more about FOAM Insulation

CONTACT

Morse Brothers Construction Co.

678 Island Drive - Grass Lake

Phone (517) 522-4523 days, or (313) 475-7665 between 6-9 p.m.



BULLDOG JESSE COBURN (22) springs up into the air with a long shot from the side of the basket during Chelsea's game with Stockbridge Tuesday night. Chelsea fell behind Stockbridge in the first quarter when the team made only 3 of 20 scoring attempts from the field, but out-scored Stockbridge in the second quarter when the same shots fell in through the hoop. However, a 28-6 Stockbridge blitz in the third quarter, put the Panthers out of reach, and that momentum carried them to an 84-57 victory.

Wrestling Tourney Scheduled Saturday

This year's Dexter Invitational Wrestling Tournament will take place at Dexter High school Saturday, Dec. 3. Preliminaries will begin at 11 a.m., with the finals scheduled for 7 p.m. Admission to adults will be \$1.50, with \$1 for students.

SCHOOL LUNCH MENU

Monday—Sloppy joes with cheese slice, buns, tater tots with catsup, carrot strips, sunshine salad, milk.
Tuesday—Varsity burgers on a bun, cheese slice, au gratin potatoes, 24-hour dessert, milk.
Wednesday—Toasted cheese sand-

wich, tomato-soup, crackers, baked dessert, milk.
Thursday—Submarine sandwich with sauce, cole slaw, potato chips, pink applesauce, milk.
Friday—Fish burger on a bun, sauce, french fries, buttered peas, strawberry cake, milk.

Motor Home Vandalized in Dealer Lot

Chelsea police are investigating the theft of a color television and CB radio taken from two motor homes parked in the Lloyd Bridges Chevrolet dealership lot, at 1603 S. Main St., sometime between the evening of Nov. 23 and the morning of Nov. 25.

According to police reports, a 10-inch Hitch color television, valued at \$385, was stolen from inside of a locked 1978 32-foot motor home after thieves gained entry by prying open a window on the passenger's side.

The theft was discovered by Howard Turner, a Lloyd Bridges employee, who told police he had locked the motor home Nov. 23 before leaving work. When he returned to work and unlocked the vehicle Nov. 25, he discovered it had been entered and ransacked, and that some property was missing.

In addition to the missing articles, the dashboard of the vehicle had been damaged by thieves in their attempt to steal the motor home's AM-FM-CB radio, and damage was done to the passenger's window when it was pried open.

Upon checking other homes in the lot, it was discovered that three other motor homes had been entered and damaged. A privately owned motor home in the lot, parked there to await repairs, was missing the CB radio.

No suspects have been named in the case.

School Board Agenda Listed

Several items will top the agenda of the Dec. 5 meeting of the Chelsea Board of Education, including adoption of goals for the 1977-78 school year.

Mrs. Susan Carter, a counselor at Chelsea High school, will report on the results of recent state assessment tests, particularly those taken by 4th and 7th graders in reading and mathematics.

Committee reports on the publication of the school newsletter, "The Chelsea Challenge," will follow, as will an update on the athletic budget covering fall sports programs in Chelsea schools.

All board meetings are open to the public and begin promptly at 8 p.m. in the Chelsea High school board room.

Dexter Man Asphyxiated In Trailer

Detectives of the Washtenaw County Sheriff's Department are investigating the death of a 44-year-old Dexter man who was killed in his house trailer early Thursday morning, Nov. 24, when the flame apparently went out in a propane stove he was using for heat and he was asphyxiated, according to a spokesman for the department.

Kenneth L. Blankenship, 7520 Fourth St., was found dead by his wife at 8:47 a.m. in the house trailer behind his home when she went out to wake him, it was reported. According to the sheriff's department, the Blankenships were in the habit of using the propane stove with a flower pot overturned atop it for heat, and that this time the flame apparently went out, allowing the pure gas to escape.

Although the Dexter Fire Department was summoned to conduct resuscitation operations, Blankenship was pronounced dead at the scene.

The Chelsea Standard, Thursday, December 1, 1977

Pinckney Area Youth Completes Navy Electronics Course

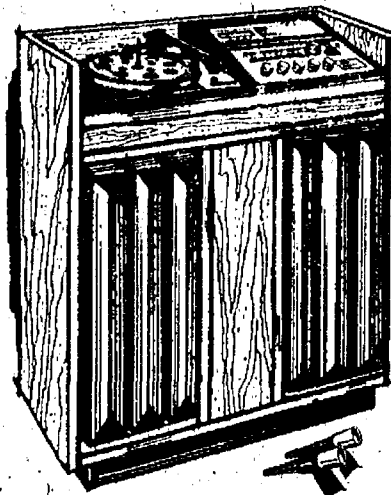
Navy Seaman Charles A. Wykovic, son of Mr. and Mrs. Michael Wykovic of 3005 Tamarack Lake Dr., Pinckney, has completed the Navy's Basic Electricity-Electronics course.

Four weeks of study at the Naval Service School Command, Great Lakes, Ill., included review of basic mathematics, fundamental electrical formulas plus the principles of alternating and direct current circuits. Students also received instruction on basic circuit testing methods, including the use of multimeters and audio signal generators.

Personal Notes

Week-end houseguests and Thanksgiving Day guests at the home of Mr. and Mrs. Floyd E. Gentner, of 316 Jackson St., were Mr. and Mrs. Duane L. Gentner, daughter, Lisa, and son, Christopher, of Hanover Park, Ill.; Mr. and Mrs. Ronald F. Gentner and daughter, Tracey, of Ypsilanti; Mr. and Mrs. Terry D. Gentner, of Ann Arbor; and Robert Abdon of Chelsea. Other Thanksgiving Day callers included Elvira Wright, Marie Abdon, and Mrs. Abdon's granddaughter, Laura.

Please Notify Us of Any Change in Address



ELECTROPHONIC TOTAL MUSIC SYSTEM

- Features:
- ★ AM-FM MPX
- ★ Automatic Changer
- ★ 8-Track Play And Record

Just \$225

at

THE MUSIC HUTCH

8107 Main St., Dexter

Ph. 426-4380

Carl's Cleaning Service

521 S. Main St.

Chelsea, Mich.

Professional Carpet & Upholstery Cleaning

BUSINESS - RESIDENTIAL

FREE ESTIMATES

Phone 475-8007

Thinking CARPET? Think SCHNEIDER'S



Visit the wonderful world of carpeting at Schneider's, one of the area's finest, full-service carpet stores, conveniently located in West Ann Arbor on Wagner Road between Jackson and Liberty.

Schneider's carries a broad selection of quality, name-brand carpets at prices consistently among the lowest in the entire area. Try us.

662-9332

OPEN MON & FRI NIGHTS TIL 8:30 PM

SCHNEIDER CARPET CO., INC.

745 S. WAGNER RD. ANN ARBOR

at HEYDLAUFF'S
COME IN
TODAY!

**SPECIAL
NEW MODEL SALE
ON MAYTAG**

A NEW LARGE CAPACITY

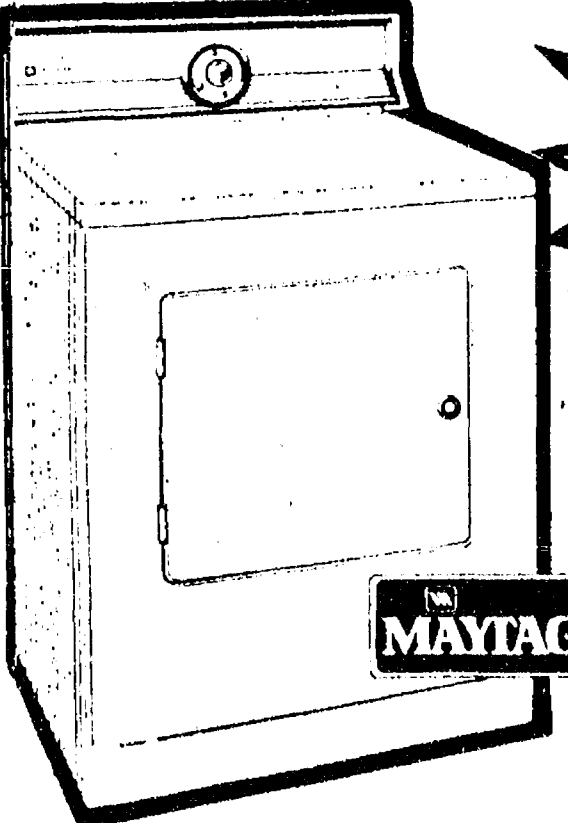
WASHER... an energy saver too! Uses less hot water and less total water than any other top loading automatic washer of comparable capacity. Big tub capacity when needed; four water level selections to save water on smaller loads. A fabric-matic washer with DELICATE, PERMANENT PRESS and REGULAR CYCLES.

SAVE
\$35.00

On this large capacity Maytag compared with previous large capacity models.

A NEW DRYER TOO! Big load capacity — cycles for all fabrics stream of heat drying. NEW LOW PRICE! SAVE NOW.

Gas and Electric



Buy the Pair SAVE
\$55.00

Compared to previous available models with similar features.

PLUS! SPECIAL
PAIR DISCOUNT!
U-HAUL?
SAVE MORE.

We Promise:

- courteous attention
- wide selection
- free parking
- flexible terms
- expert installation
- dependable service

MAYTAG

HEYDLAUFF'S

113 North Main St., Chelsea

Ph. 475-1221

We've Found A New Home MIKE'S SHIRT SHOP

Located inside Old World Village Mall
Westgate Shopping Center

NEW SELECTION OF

SHIRTS & TRANSFERS NOW IN STOCK

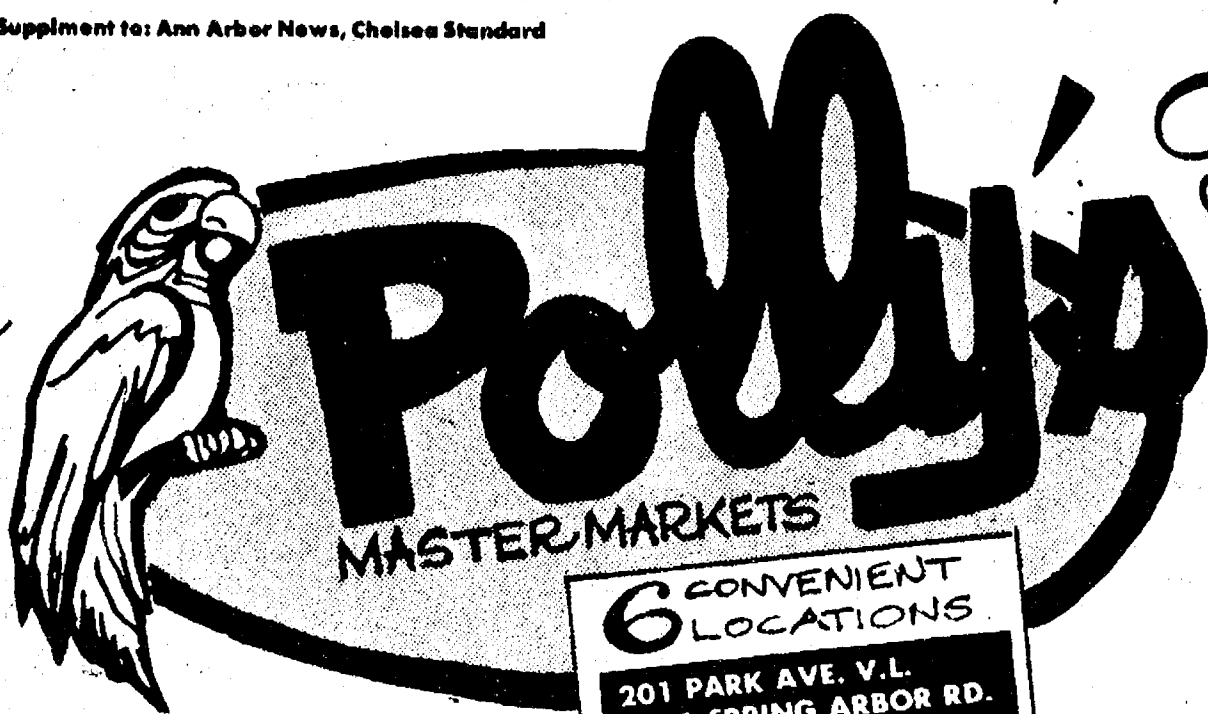
... Create A Custom Christmas Gift ...

Prices Start at \$3.50

Phone
761-7310

Thousands of Shirt and Transfer Combinations

DAILY
9:30 - 9
SUNDAY
12 - 5



It's the Season to be...
 MAKE IT JOLLY WITH POLLY'S BAKING SPECIALS **Baking!**

6 CONVENIENT LOCATIONS

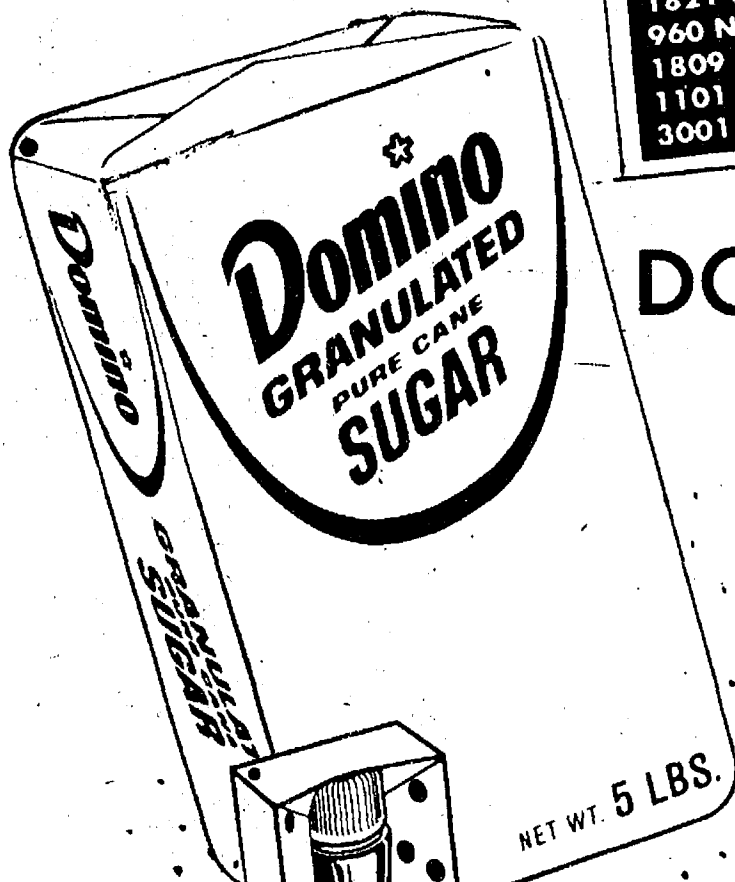
201 PARK AVE. V.L.
 1821 SPRING ARBOR RD.
 960 NORTH WEST AVE.
 1809 EAST MICHIGAN
 1101 M-52, CHELSEA
 3001 EAST MICHIGAN

SAVE 44¢ WITH COUPON

- 10-X POWDERED
- LIGHT BROWN
- DARK BROWN

Domino SUGAR

4 \$1
 1-LB. BOXES



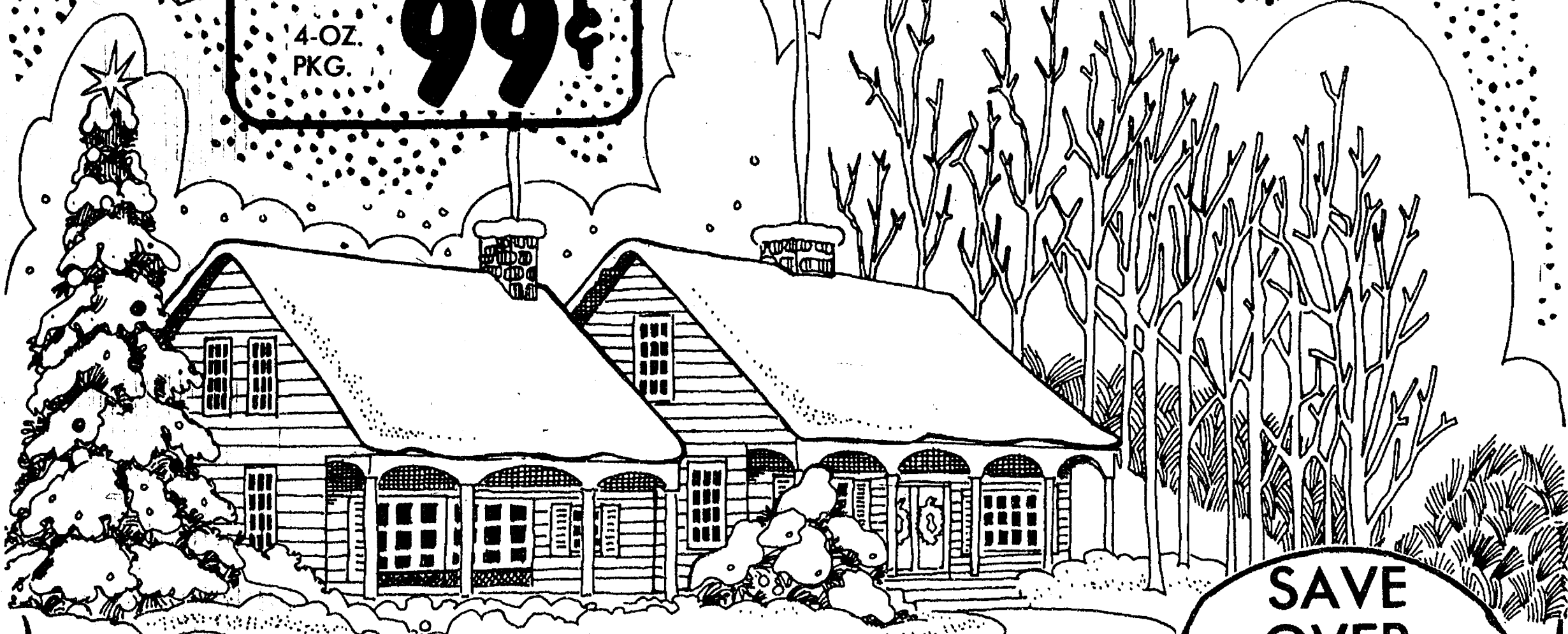
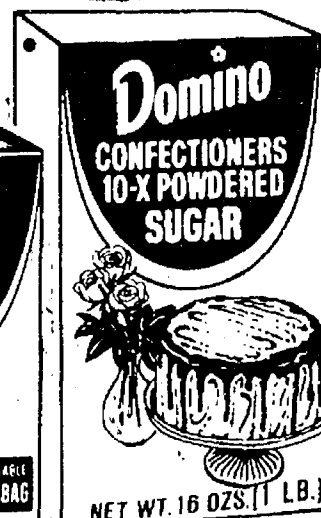
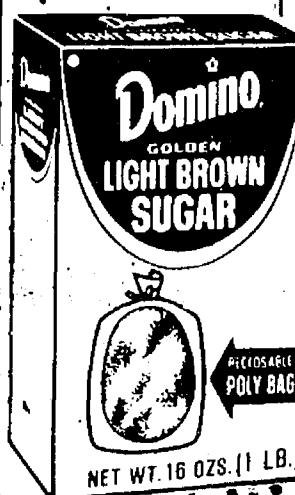
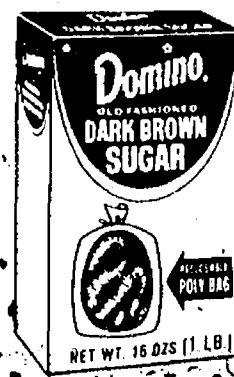
SAVE 24¢ WITH COUPON
DOMINO PURE CANE SUGAR
 5-LB. BAG

69¢



SAVE 50¢ WITH COUPON
DURKEE PURE VANILLA
 4-OZ. PKG.

99¢



SAVE OVER \$700
 WITH ALL POLLY'S IN-STORE COUPON

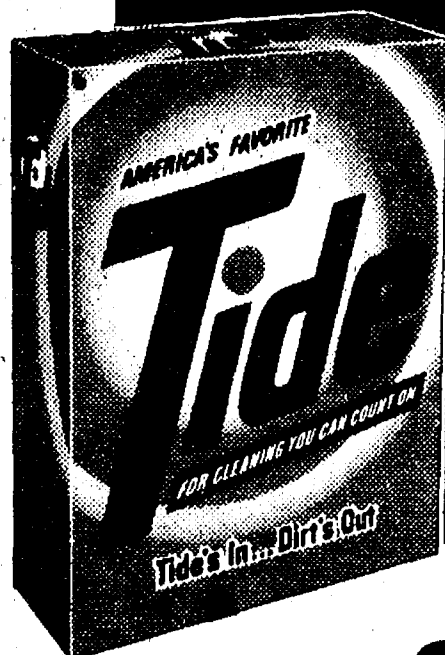


SEALTEST
HOMOGENIZED

MILK

PLASTIC
GALLON

\$1.25



SAVE 36¢ WITH IN-STORE COUPON

TIDE
LAUNDRY DETERGENT

\$1.19
49-OZ.



**Freshlike
Sale!**

- CUT GREEN BEANS
- FRENCH GREEN BEANS
- WHOLE KERNEL CORN
- GARDEN SWEET PEAS
- CREAM STYLE CORN
- CUT LEAF SPINACH
- SLICED BEETS
- SLICED CARROTS

4 **\$1.**
12/14
OZ. CANS

POLLY'S HOT DOG or

HAMBURG BUNS

3 8-CT.
PKGS. **89¢**

KRAFT
INDIVIDUALLY WRAPPED

AMERICAN SLICES

12-OZ.
PKG. **93¢**

SAVE 30¢ WITH IN-STORE COUPON

KRAFT

ORANGE JUICE

HALF-GALLON

93¢

SAVE 14¢ WITH IN-STORE COUPON

IMPERIAL SOFT

MARGARINE

1-LB. PKG.

59¢

SAVE 50¢ WITH IN-STORE COUPON

GLAD

TRASH BAGS

30-CT.

\$1.39

SAVE 70¢ WITH IN-STORE COUPON

CHUMMIE DRY

DOG FOOD

25-LB.

\$2.99

SAVE 25¢ WITH IN-STORE COUPON

25¢ OFF LIQUID

PALMOLIVE

32-OZ.

89¢

SAVE 10¢ WITH IN-STORE COUPON

BROWNS BEST

NORTHERN BEANS

2-LB.

59¢

SAVE 8¢ WITH IN-STORE COUPON

DUNCAN HINES

BROWNIE MIX

1 1/2-OZ.

75¢

BUY 2 • SAVE 40¢ WITH IN-STORE COUPON

BRAWNY

TOWELS

TWIN PAK

65¢

BUY 2 • SAVE 24¢ WITH IN-STORE COUPON

FAMILY SIZE BAR

DIAL SOAP

7-OZ.

39¢

SAVE 22¢

CREAMETTES THIN

SPAGHETTI

2-LB.

69¢

SAVE 19¢

EDON

BATH TISSUE

4-ROLL PAK

53¢

SAVE 14¢

MARZETTI

SLAW DRESSING

16-OZ.

89¢

SAVE 7¢

BALLARD

BISCUITS

8-OZ.

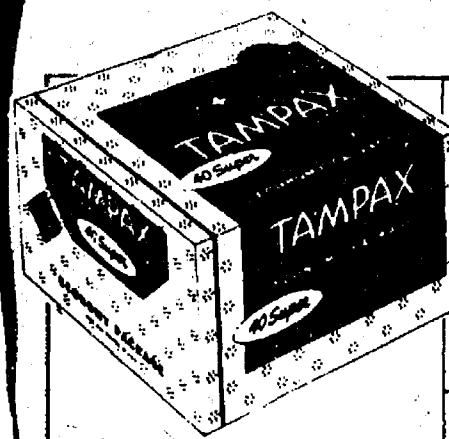
11¢



Polly's
MASTER MARKETS

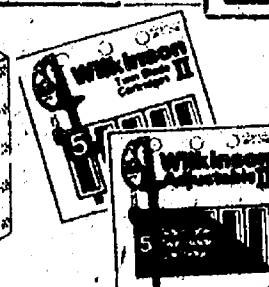
6 CONVENIENT LOCATIONS

201 PARK AVE. V.L.
1821 SPRING ARBOR RD.
960 NORTH WEST AVE.
1809 EAST MICHIGAN
1101 M-52, CHELSEA
3001 EAST MICHIGAN



40-CT.

\$1.49



WILKINSON II or
WILKINSON ADJUSTABLE II

Twin Blade Cartridges

5 carts — \$1.60 Value
Your Choice

\$1.26

BAN ROLL ON

Anti-Perspirant Deodorant
Regular, Unscented,
Quick Dry



2 1/2 oz.
\$2.25 Value
\$1.29

Vicks NyQuil

NIGHTTIME
COLDS
MEDICINE



6 ounce

\$2.60 Value

\$1.58



**DESITIN
LOTION**

Reg. & Baby Fresh
10 oz. — \$1.75 Value

\$1.58

**COLGATE
DENTAL CREAM**



7 oz.
Tube

\$1.09

\$1.58
Value

**EFFERDENT
DENTURE CLEANSER**



Bonus-48's
\$1.69 Value

\$1.09

**CEPACOL
MOUTHWASH**

Bonus Bottle 24 oz.

\$2.03 Value

99¢



LOZENGES

24's — \$1.10 Value

69¢

ADORN HAIRSPRAY

New! Environmental Formula

9 oz. — \$2.49 Value

\$1.59

TAME CREME RINSE

16 oz. — \$2.34 Value

\$1.89



POLLY'S "BUDGET-PRICED"

HEALTH and BEAUTY AIDS

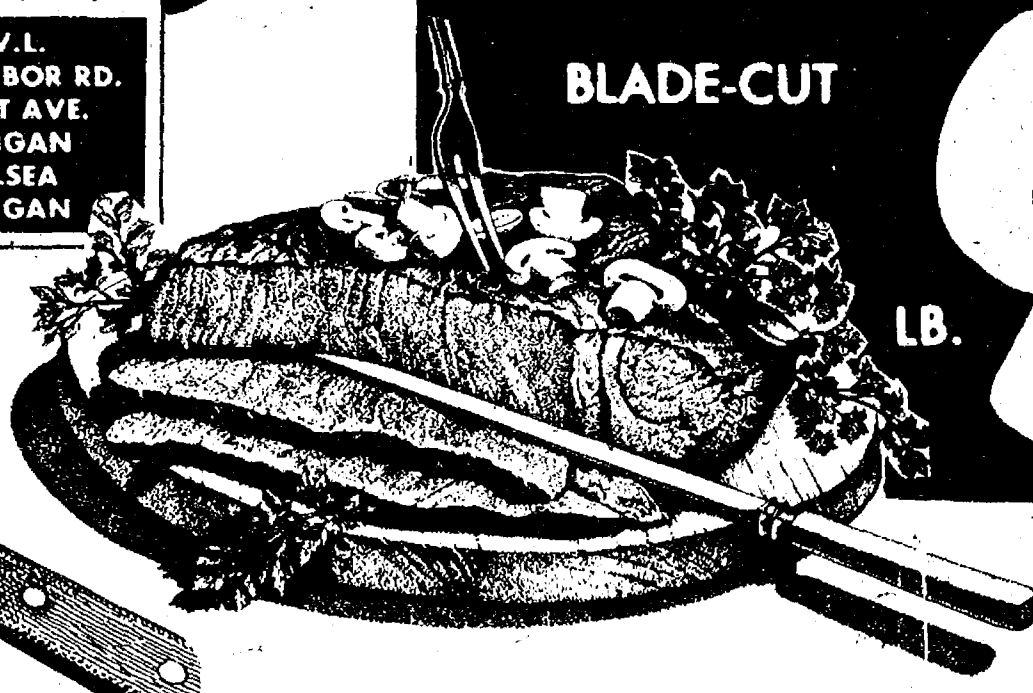


Polly's

MASTER MARKETS

6 CONVENIENT LOCATIONS

201 PARK AVE. V.L.
1821 SPRING ARBOR RD.
960 NORTH WEST AVE.
1809 EAST MICHIGAN
1101 M-52, CHELSEA
3001 EAST MICHIGAN



U.S.D.A. CHOICE BONELESS
CHUCK ROAST

BLADE-CUT

LB. **99¢**

U.S.D.A. CHOICE WESTERN BEEF

SIRLOIN STEAK

\$1.59

LB.

U.S.D.A. CHOICE BEEF
BONELESS
ENGLISH ROAST

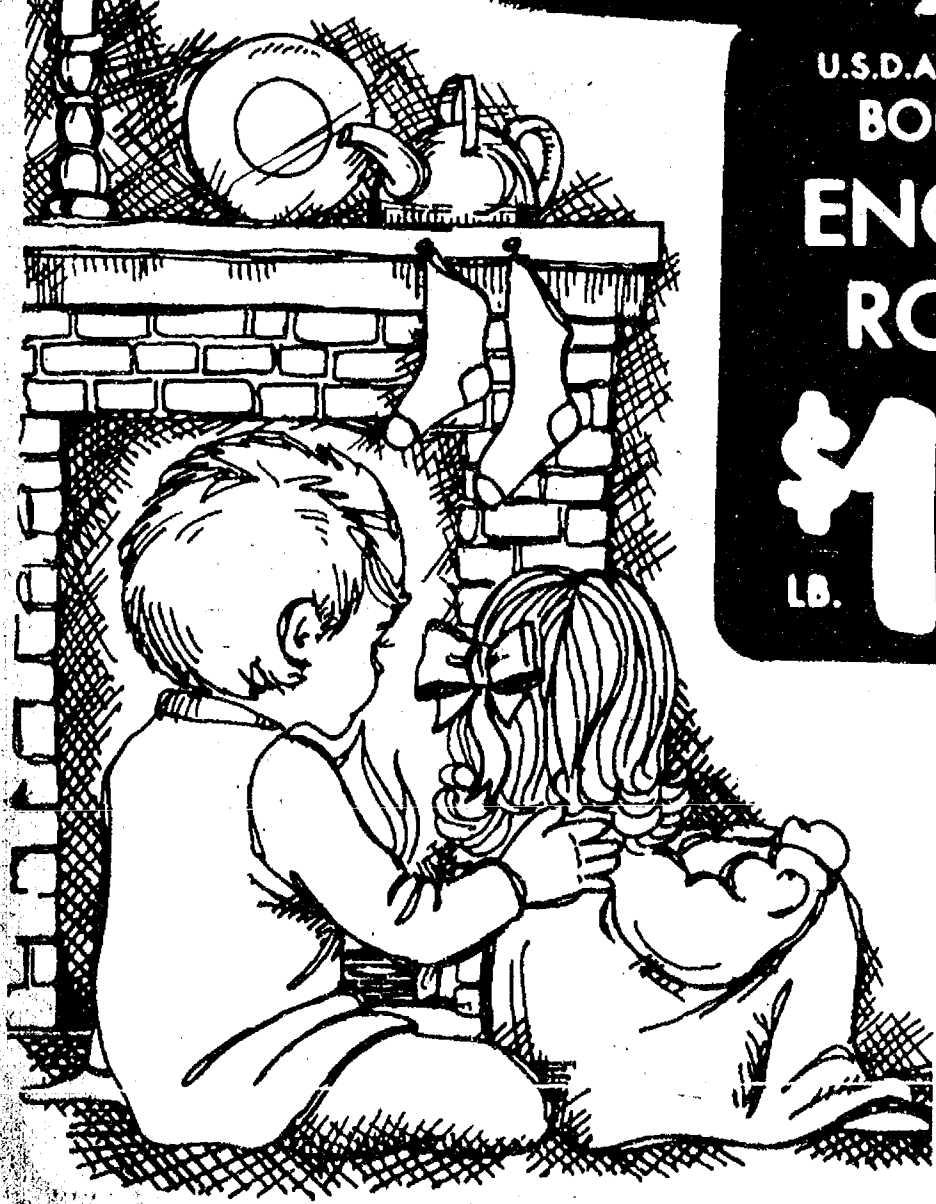
LB. **\$1.19**

U.S.D.A. CHOICE
T-BONE STEAK

LB. **\$1.99**

U.S.D.A. CHOICE
GROUND BEEF CHUCK

LB. **89¢**



U.S.D.A. CHOICE

CUBE STEAK
HYGRADE SLICED

BOLOGNA
ECKRICH SMOKED

SAUSAGE
HYGRADE CHUNK

BOLOGNA

..... LB.

..... LB.

..... LB.

..... LB.

\$1.59

99¢

\$1.59

79¢

U.S.D.A. CHOICE

STEW BEEF
FRESH

BEEF LIVER
CENTER RIB

PORK CHOPS
CENTER LOIN

PORK CHOPS

..... LB.

..... LB.

..... LB.

..... LB.

\$1.19

69¢

\$1.39

\$1.49

QUARTERED

PORK LOIN

SLICED
FREE!

LB.

99¢

DINNER BELL
**CHOPPED
MEATS**
3-OZ.
PKG. **49¢**

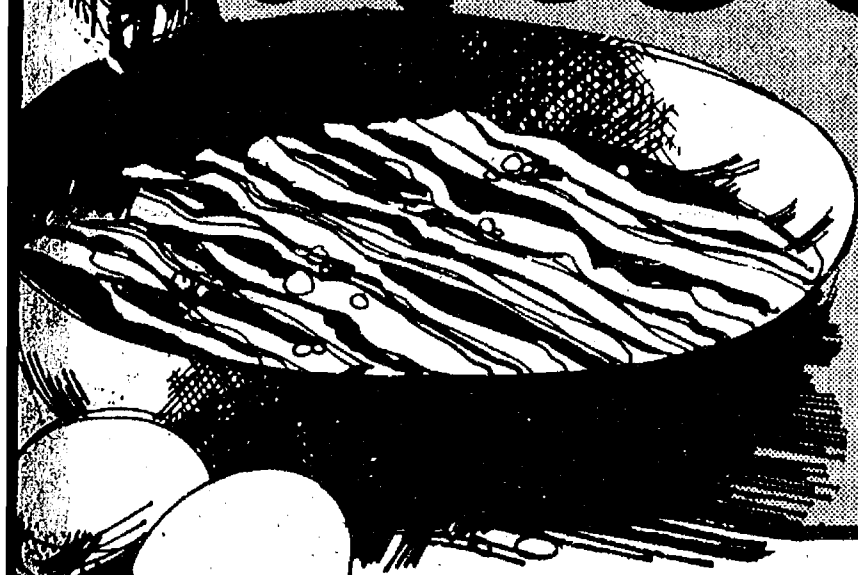


HOLLYRIDGE SLICED

BACON

1-LB.
PKG.

99¢



PATTIE JEAN FRESH FROZEN

WHOLE FRYERS

LB. **49¢**



HYGRADE

BALLPARK FRANKS

LB.
PKG.

99¢

GUNSBERG
**CORNERED
BEEF
BRISKET**

89¢

LEAN TENDER
**SPARE
RIBS**

LB.

99¢



U.S. NO. 1 MICHIGAN

**McIntosh
APPLES**

3-LB.
BAG

59¢



FLORIDA

ORANGES

18

125-
SIZE
for

99¢

SAVE 50% WITH IN-STORE COUPON

WILD

10-LB.
BAG

BIRD SEED

99¢

CELLO-BAG

FRESH

1-LB.

COLE SLAW

49¢

ORDER NOW!!

FRUIT BASKETS

VARIETY OF SIZES and PRICES

VINE RIPE TOMATOES

6

for

99¢

APPROXIMATELY
59¢ LB.

FRESH GREEN PEPPERS or
CUCUMBERS

6

for


\$1.00

SAVE 18¢...GLACIER CLUB

ICE
CREAM

HALF-
GALLON

79¢



Polly's
MASTER MARKETS

6 CONVENIENT
LOCATIONS

201 PARK AVE. V.L.
1821 SPRING ARBOR RD.
960 NORTH WEST AVE.
1809 EAST MICHIGAN
1101 M-52, CHELSEA
3001 EAST MICHIGAN

SAVE 28¢
MINUTE MAID
**ORANGE
JUICE**

12-OZ.
CAN

69¢

LACHOY
EGG ROLLS

FOUR
VARIETIES

2

6 1/2-OZ.

\$1.00

BORDEN
SUNDAE
CONES 6-PK

69¢

9 VARIETIES...MORTON

FROZEN DINNERS

10-
OZ.

47¢

BUY 2 • SAVE 80¢ WITH IN-STORE COUPON

TONY'S
SUPREME
PIZZA

\$1.89

21 3/4
OZ.





Polys

MASTER MARKETS

6 CONVENIENT LOCATIONS
 201 PARK AVE. V.I.
 1821 SPRING ARBOR RD.
 960 NORTH WEST AVE.
 1809 EAST MICHIGAN
 1101 M-52, CHELSEA
 3001 EAST MICHIGAN

WHEAT, CORN or

RICE CHEX

CEREAL

12/15
OZ.

65¢



PEPSI

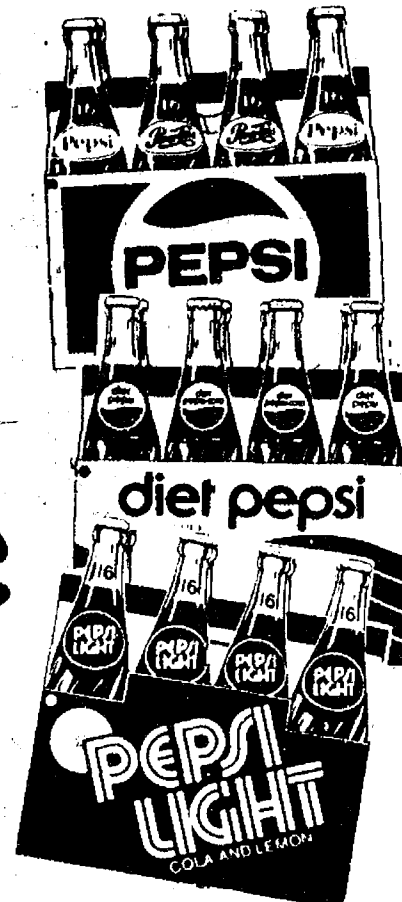
DIET PEPSI or PEPSI LIGHT

8-PAK
16-OZ.

RETURNABLE
BOTTLES

99¢

PLUS DEPOSIT



NABISCO

15-OZ. PKG.

OREO

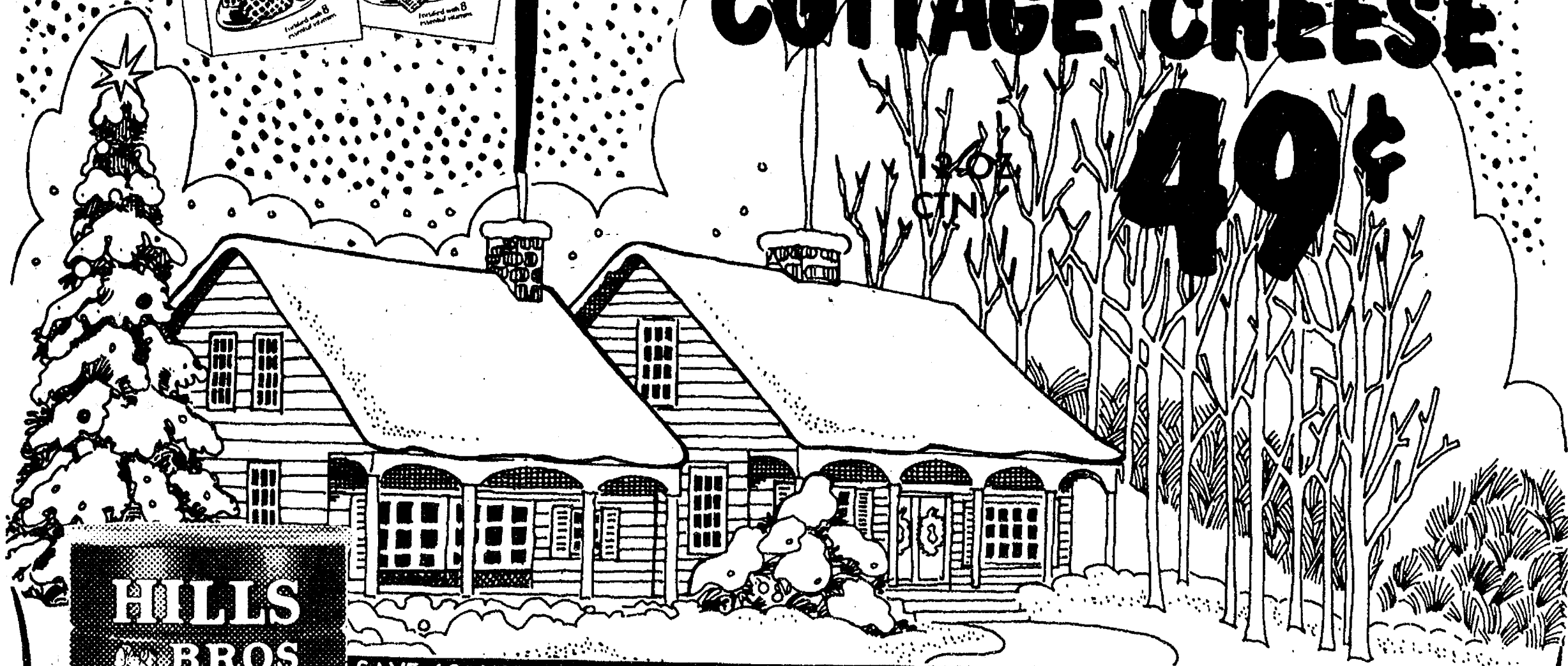
SANDWICH COOKIES

89¢

SEA TEST LIGHT n' LIVELY

COTTAGE CHEESE

49¢



HILLS
BROS



Regular
COFFEE

SAVE 60¢ WITH IN-STORE COUPON

HILLS BROS COFFEE

2-LB.
CAN

\$5.59